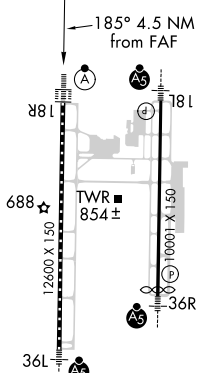


ILS or LOC RWY 18R
HUNTSVILLE INTL-CARL T JONES FIELD (HSV)

MISSED APPROACH: Climb to 1300 then climbing right turn to 3000 on heading 270° and RQZ R-230 to JUVLO INT/RQZ 28.7 DME and hold.

UNICOM
122.95

HIRL Rwy's 18L-36R and 18R-36L					
FAF to MAP 4.5 NM					
Knots	60	90	120	150	180
Min:Sec	4:30	3:00	2:15	1:48	1:30