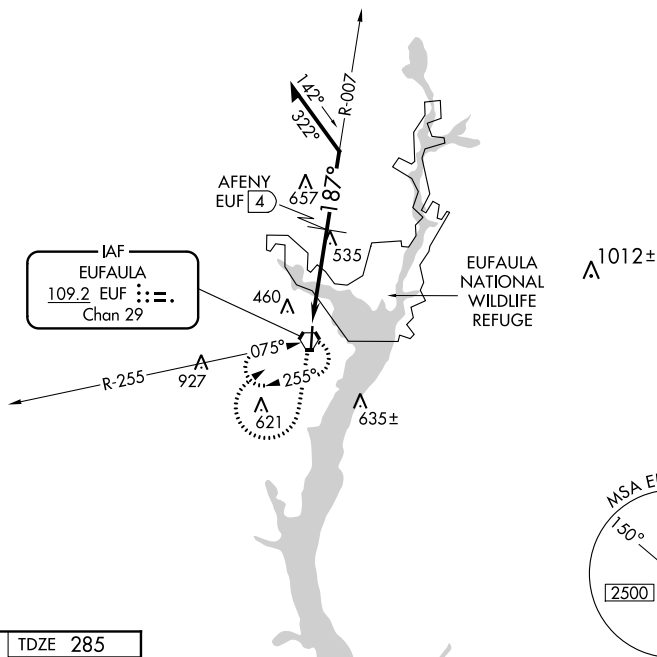


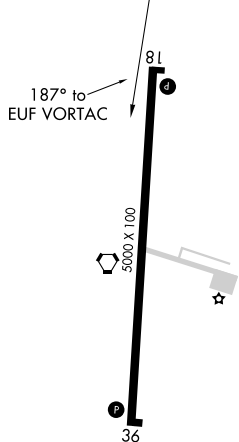
VOR RWY 18
WEEDON FIELD (EUF)

MISSED APPROACH: Climb to 1500 then climbing right turn to 2000 direct EUF VORTAC and hold.

ASOS 128.325	11A AWOS-3 118.775	ATLANTA APP CON ★ 125.5 323.1	CLNC DEL 134.25 339.8	UNICOM 122.8 (CTAF) 0
------------------------	------------------------------	-----------------------------------------	---------------------------------	----------------------------------------



ELEV 285		TDZE 285
----------	--	----------



MIRL Rwy 18-36 **L**
EUFULA, ALABAMA
Amdt 8A 12SEP19

*1080 when using Columbus, GA altimeter setting.

CATEGORY	A	B	C	D
S-18	1040-1 755 (800-1)	1040-1¼ 755 (800-1¼)	1040-2¼ 755 (800-2¼)	1040-2½ 755 (800-2½)
CIRCLING	1040-1 755 (800-1)	1040-1¼ 755 (800-1¼)	1040-2¼ 755 (800-2¼)	1040-2½ 755 (800-2½)

AFENY FIX MINIMUMS (DME REQUIRED)

S-18	900-1 615 (700-1)	900-1¾ 615 (700-1¾)	900-2 615 (700-2)
CIRCLING	920-1 635 (700-1)	920-1¾ 635 (700-1¾)	1000-2½ 715 (800-2½)

SE-4, 03 DEC 2020 to 31 DEC 2020

SE-4, 03 DEC 2020 to 31 DEC 2020