

VOR/DME TGE <b>117.3</b> Chan <b>120</b>	APP CRS <b>055°</b>	Rwy Idg TDZE Apt Elev <b>N/A</b> <b>N/A</b> <b>777</b>	<div>VOR-A</div> <div>AUBURN UNIVERSITY RGNL (AUO)</div>
--	------------------------	---	--

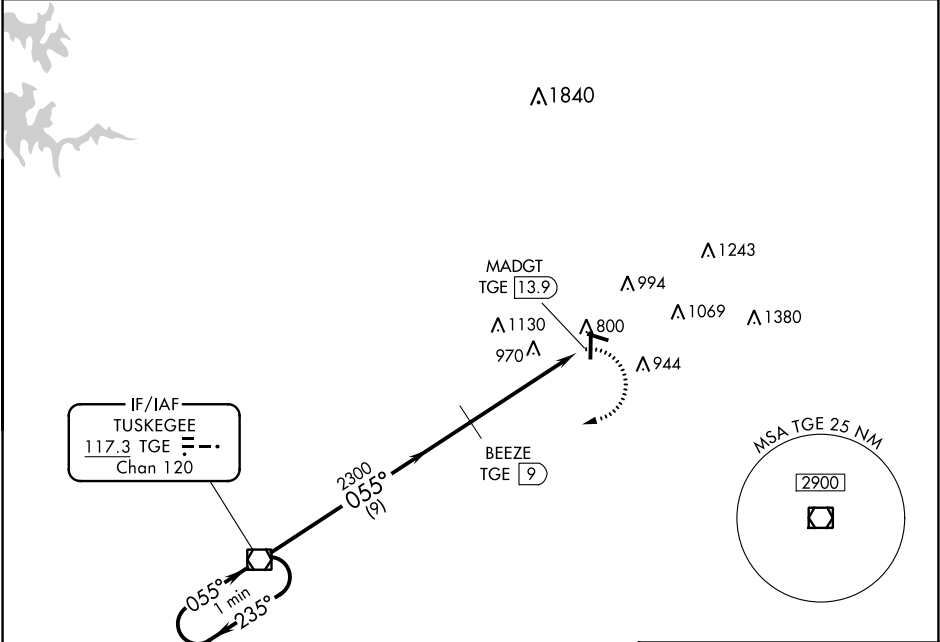
▼

▲

DME required. When local altimeter setting not received, use Columbus altimeter setting and increase all MDA 120 feet and Circling Cat C visibility ¼ SM and Circling CAT D visibility ½ SM.

MISSED APPROACH: Climbing right turn to 2300 on TGE VOR/DME R-055 to TGE VOR/DME and hold.

AWOS-3PT <b>132.575</b>	ATLANTA APP CON ★ <b>125.5 323.1</b>	CLNC DEL <b>118.7</b>	UNICOM <b>123.0 (CTAF) 0</b>
----------------------------	---	--------------------------	---------------------------------



One Minute Holding Pattern

TGE VOR/DME

BEEZE TGE (9)

2300 TGE R-055

MADGT TGE (13.9)

2300

2300

2300

2300

235°

055°

055°

055°

9 NM

4.9 NM

CATEGORY	A	B	C	D
CIRCLING	1280-1 503 (600-1)	1360-1 583 (600-1)	1380-1¾ 603 (700-1¾)	1480-2¼ 703 (800-2¼)

ELEV 777

81

4000 X 75

5264 X 100

0.9% UP

36

055° 4.9 NM from FAF

HIRL Rwy 18-36 0

MIRL Rwy 11-29 0