

WAAS CH 78106 W05A	APP CRS 052°	Rwy Idg TDZE Apt Elev	7000 595 612
--	------------------------	-----------------------------	---

RNAV (GPS) RWY 5

ANNISTON RGNL (ANB)

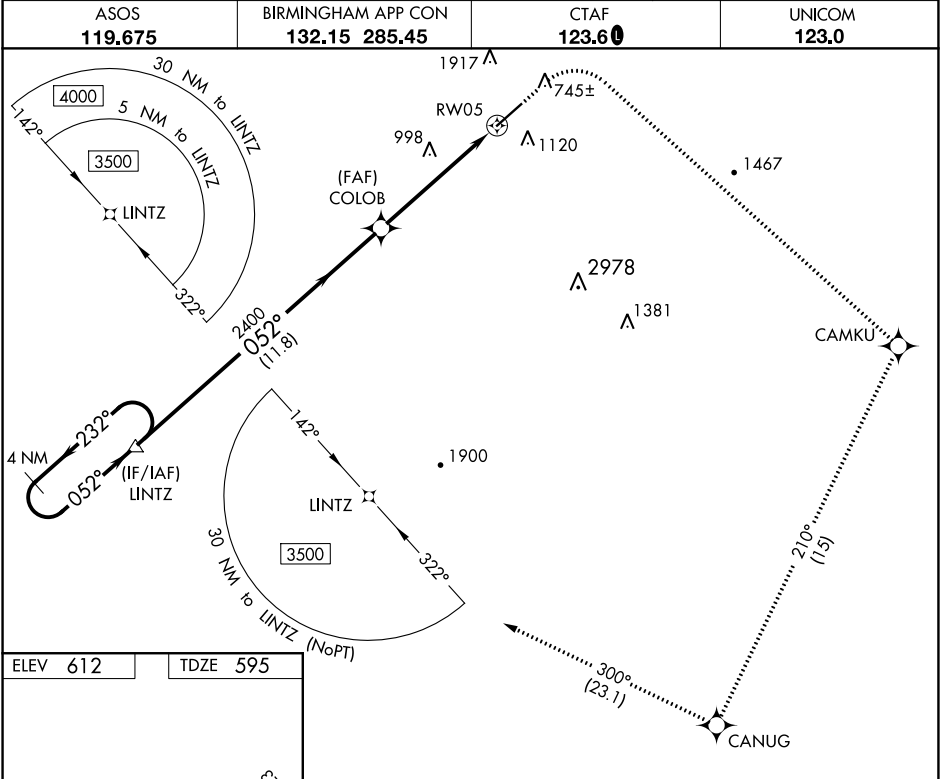
⚠

Circling NA North of Rwy 5-23. DME/DME RNP-0.3 NA. When local altimeter setting not received, use Gadsden altimeter setting and increase all DA 66 feet and all MDA 80 feet and LPV all Cats, LNAV Cats C and D and Circling Cats A, B, and C visibility ¼ SM. For inop ALS increase LPV all Cats visibility to 1 SM. For inop ALS when using Gadsden altimeter setting, increase LPV all Cats visibility to 1¼ SM. VDP NA with Gadsden altimeter setting.

MALSR

MISSED APPROACH: Climb to 1600, then climbing right turn to 3500 direct CAMKU and track 210° to CANUG and track 300° to LINTZ and hold.

ASOS 119.675	BIRMINGHAM APP CON 132.15 285.45	CTAF 123.60	UNICOM 123.0
------------------------	--	-----------------------	------------------------



ELEV 612

TDZE 595

4 NM Holding Pattern	LINTZ	1600	3500	CAMKU	tr 210°	CANUG	tr 300°	LINTZ
3500	←232°	052°	→052°	COLOB	2400	*1.7 NM to RW05		*LNAV only.
GP 3.00° TCH 40			2400					
		11.8 NM	3.9 NM	1.7 NM				

CATEGORY	A	B	C	D
LPV DA	909-5⁄8 314 (300-5⁄8)			
LNAV MDA	1160-1⁄2 565 (600-1⁄2)		1160-1¼ 565 (600-1¼)	
CIRCLING	1420-1808 (900-1)		1420-2¼ 808 (900-2¼) 1820-3 1208 (1300-3)	