


LOC I-ANB	APP CRS	Rwy Idg	7000
111.5	052°	TDZE	595
		Apt Elev	612

ILS Y or LOC Y RWY 5  
ANNISTON RGNL (ANB)

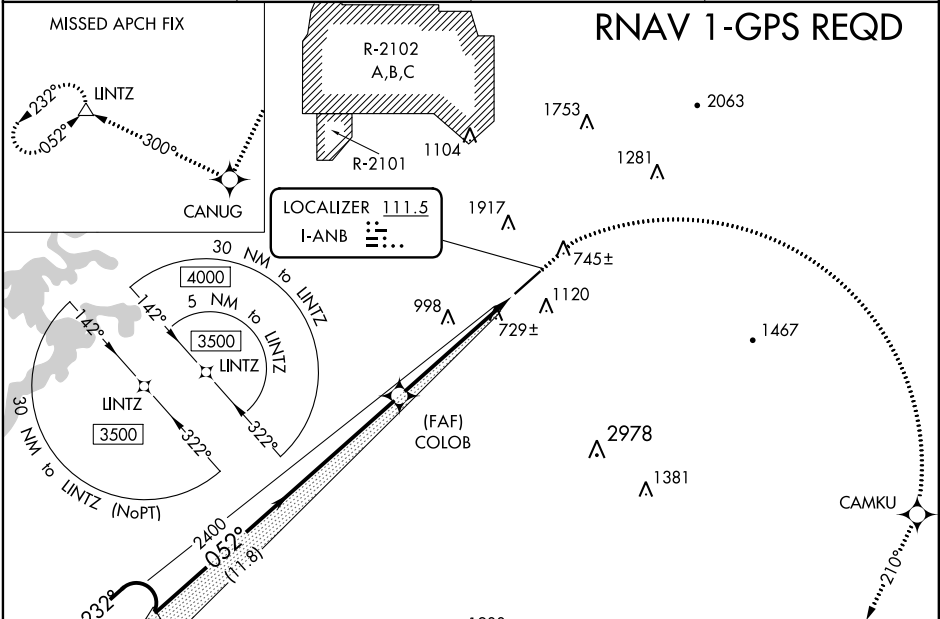
⚠ Circling NA north of Rwy 5-23. RNAV 1-GPS required. For inop ALS, increase S-ILS 5 all Cats visibility to 1 SM. When local altimeter setting not received, use Gadsden altimeter setting: increase DA to 975 and all visibilities ¼ SM; increase all MDAs 80 feet, and S-LOC 5 Cat C/D, and Circling Cat C visibilities ½ SM. For inop ALS when using Gadsden altimeter setting: increase S-ILS 5 all Cats to 1 ¼ SM.

MALSR

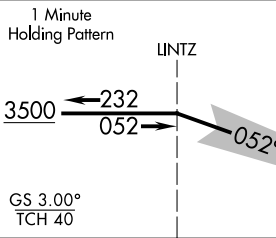


MISSED APPROACH: Climb to 1600 then climbing right turn to 3500 direct CAMKU then on track 210° to CANUG and on track 300° to LINTZ and hold.

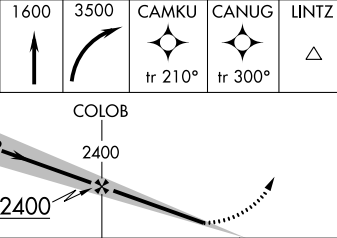
ASOS 119.675	BIRMINGHAM APP CON 132.15 285.45	CTAF 123.60	UNICOM 123.0
-----------------	-------------------------------------	----------------	-----------------



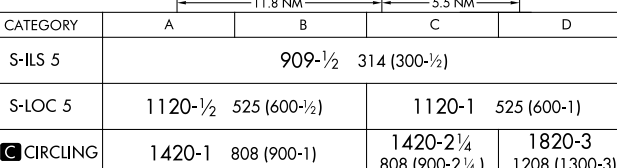
1 Minute Holding Pattern



1600 3500 CAMKU CANUG LINTZ

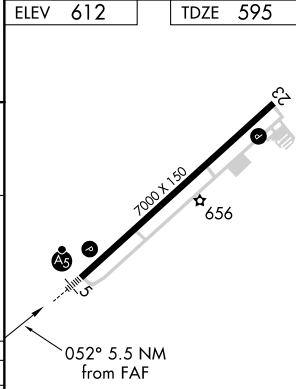


GS 3.00° TCH 40

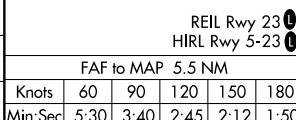


CATEGORY	A	B	C	D
S-ILS 5	909-1½ 314 (300-½)			
S-LOC 5	1120-½	525 (600-½)	1120-1	525 (600-1)
CIRCLING	1420-1	808 (900-1)	1420-2¼ 808 (900-2¼)	1820-3 1208 (1300-3)

ELEV 612 TDZE 595



REIL Rwy 23 HIRL Rwy 5-23



FAF to MAP 5.5 NM	Knots	60	90	120	150	180
	Min:Sec	5:30	3:40	2:45	2:12	1:50

SE-4, 03 DEC 2020 to 31 DEC 2020

SE-4, 03 DEC 2020 to 31 DEC 2020