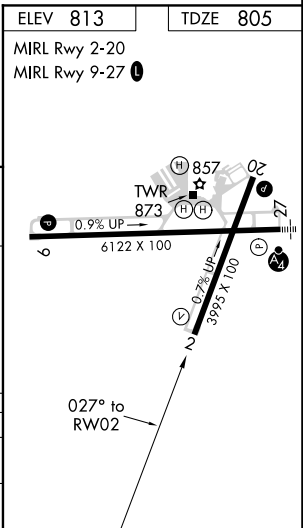
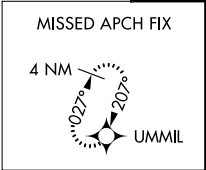
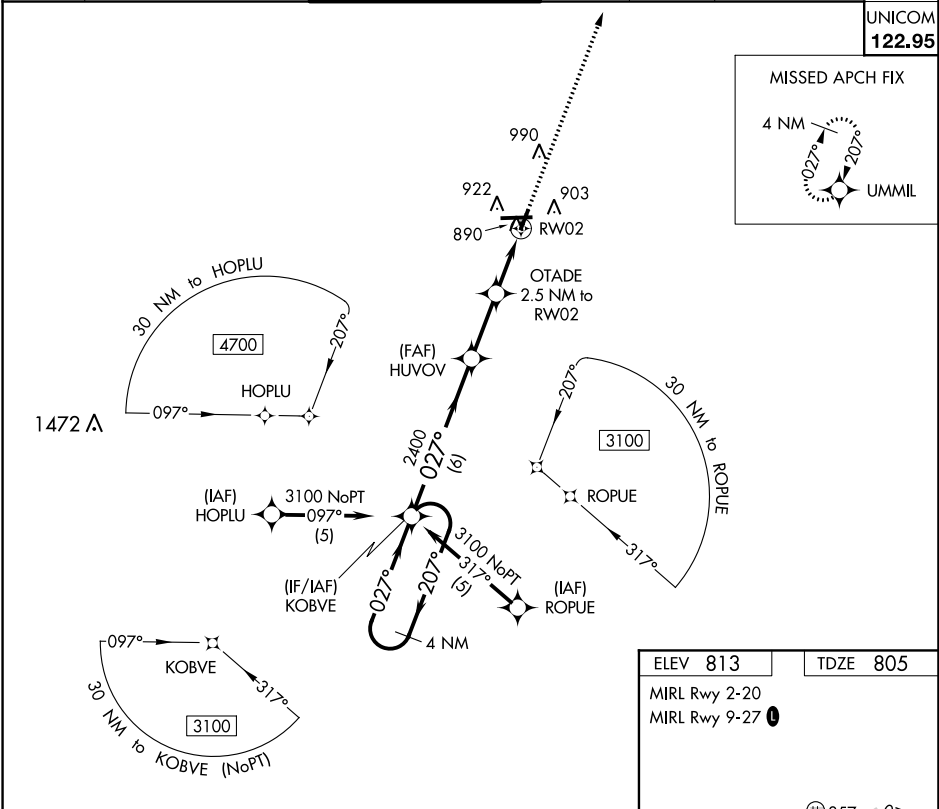


| | | |
|---------|----------|------|
| APP CRS | Rwy Idg | 3995 |
| 027° | TDZE | 805 |
| | Apt Elev | 813 |

RNAV (GPS) RWY 2
ATHENS/BEN EPPS (AHN)

| | |
|--|--|
| <p>▼ DME/DME RNP-0.3 NA. When local altimeter setting not received, use Winder altimeter setting and increase all MDA 60 feet; increase LNAV Cats C and D visibility 1/8 mile and increase Circling Cat D visibility 1/4 mile. Night landing: Rwy 2, 20 NA. Helicopter visibility reduction below 1 SM NA.</p> | <p>MISSED APPROACH: Climb to 3100 direct UMMIL and hold.</p> |
|--|--|

| | | | | | |
|---------|----------------------|------------------------|---------|----------|--|
| ASOS | ATLANTA APP CON ★ | ATHENS TOWER ★ | GND CON | CLNC DEL | CLNC DEL |
| 132.875 | 132.475 291.1 316.05 | 126.3 (CTAF) 0 338.275 | 121.8 | 121.8 | 132.475 291.1 316.05 (when twr closed) |



| | | | | |
|----------------------|--------------------|--------------------|-----------------------|--------------------|
| 4 NM Holding Pattern | KOBVE | HUVOV | OTADE 2.5 NM to RWY 2 | 3100 UMMIL |
| 3100 | 207° | 027° | 3.00° TCH 39 | |
| 2400 | | | 1600 | |
| | 6 NM | 2.5 NM | 2.5 NM | |
| CATEGORY | A | B | C | D |
| LNAV MDA | 1140-1 | 335 (400-1) | | |
| CIRCLING | 1260-1 447 (500-1) | 1280-1 467 (500-1) | 1320-1½ 507 (600-1½) | 1460-2 647 (700-2) |