

VOR/DME OTK	APP CRS	Rwy Idg	8002
114.8	190°	TDZE	199
Chan 95		Apt Elev	203

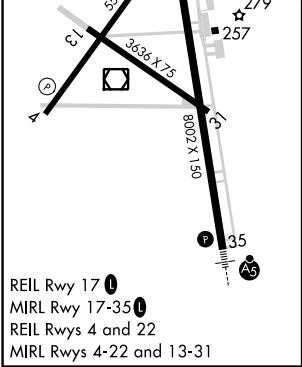
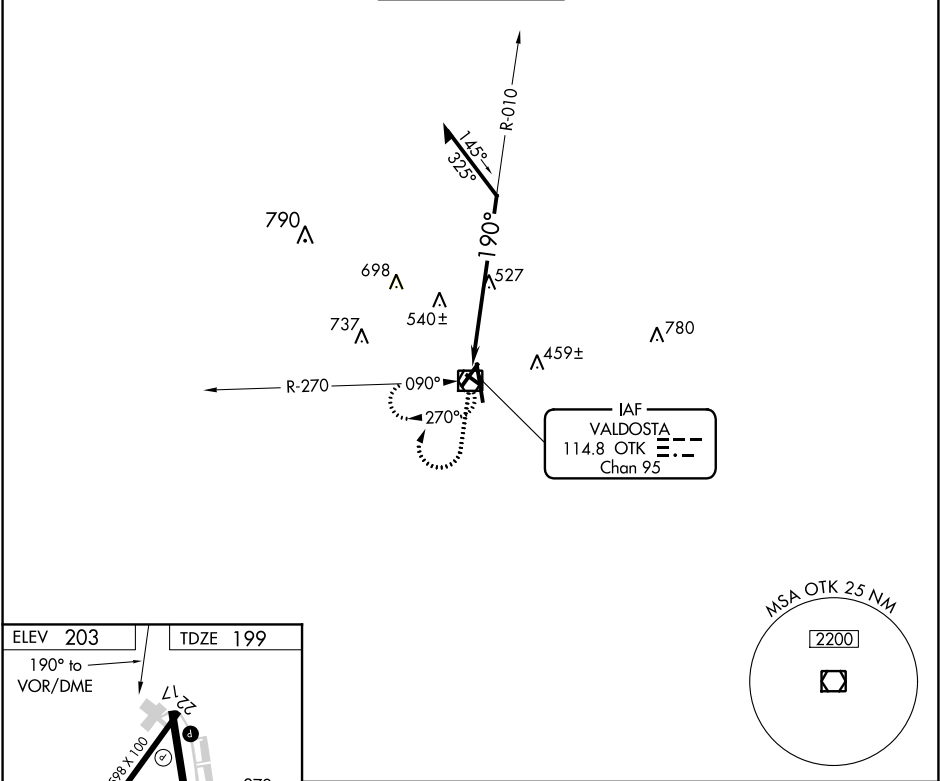
VOR RWY 17

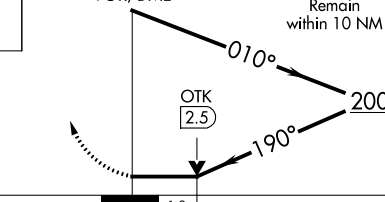
VALDOSTA RGNL (VLD)

⚠ Rwy 17 helicopter visibility reduction below ¼ SM NA. VDP NA when using Moultrie altimeter setting. When local altimeter setting not received, use Moultrie altimeter setting and increase all MDAs 100 feet and increase S-17 Cats B/C visibility and Circling Cats B/C/D visibility ¼ SM. Circling Rwy 4, 13, 31 NA at night.

MISSED APPROACH: Climb to 1500 then climbing right turn to 2000 direct OTK VOR/DME and hold, continue climb-in-hold to 2000.

ASOS	VALDOSTA APP CON *	VALDOSTA TOWER *	GND CON	UNICOM
126.225	126.6 285.6	120.9 (CTAF) 0	121.7	122.95



1500	2000	OTK				
CATEGORY		A	B	C	D	
S-17		840-1 641 (700-1)		840-1 $\frac{3}{4}$ 641 (700-1 $\frac{3}{4}$)	840-2 641 (700-2)	
CIRCLING		840-1 637 (700-1)		840-1 $\frac{3}{4}$ 637 (700-1 $\frac{3}{4}$)	840-2 637 (700-2)	