

ROME, GEORGIA

AL-855 (FAA)

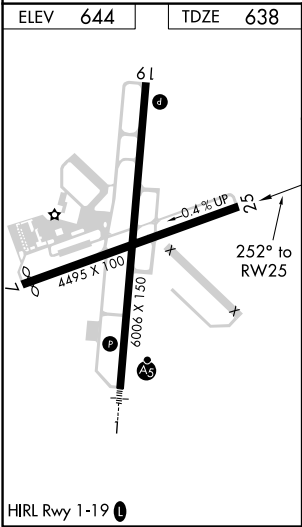
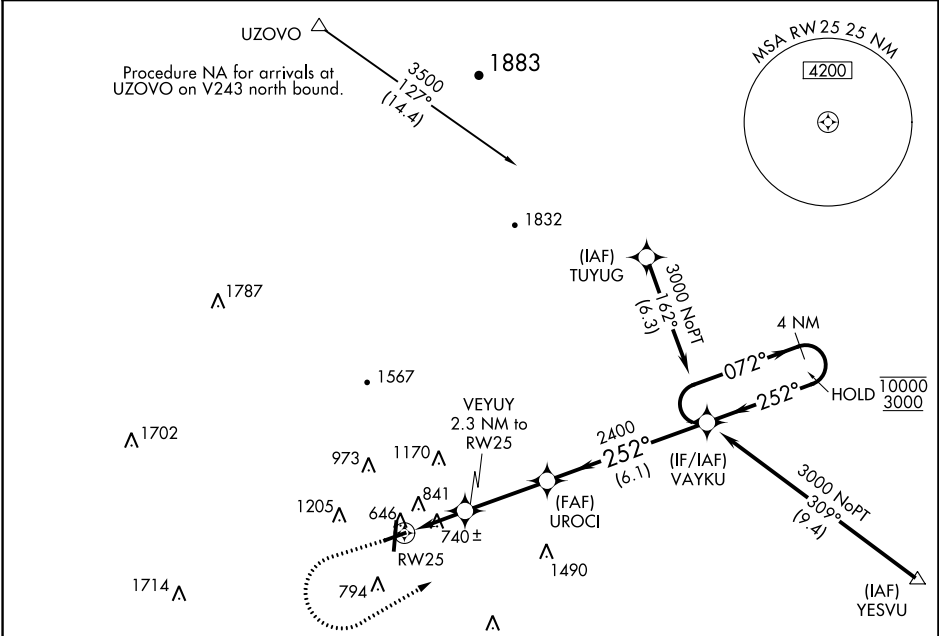
18256

WAAS CH 56542 W25A	APP CRS 252°	Rwy Idg TDZE 638 Apt Elev 644
--	------------------------	---

RNAV (GPS) RWY 25

RICHARD B RUSSELL RGNL - J H TOWERS FIELD (RMG)

RNP APCH.			MISSED APPROACH: Climb to 1100 then climbing left turn to 3000 direct VAYKU and hold.
ASOS 119.925	ATLANTA CENTER 124.5 270.325	GCO 121.725	UNICOM 123.0 (CTAF) 0



1100 ↑	3000 ↖	VAYKU ✳	4 NM Holding Pattern			
VEUYUY 2.3 NM to RW25		UROCI	VAYKU	072° → 10000 ← 252° 3000		
1 NM to RW25		3.00° TCH 45		2400		
RW25						
1 NM		1.3 NM	3.1 NM	6.1 NM		
CATEGORY		A	B	C	D	
LP	MDA	1000-1 362 (400-1)				
LNAV MDA		1100-1 462 (500-1)		1100-1 3/8 462 (500-1 3/8)		
CIRCLING		1140-1 496 (500-1)	1200-1 556 (600-1)	1480-2 1/2 836 (900-2 1/2)	1860-3 1216 (1300-3)	

ROME, GEORGIA
Amdt 1 13SEP18

RICHARD B RUSSELL RGNL - J H TOWERS FIELD (RMG)
34°21'N-85°10'W
RNAV (GPS) RWY 25

SE-4, 03 DEC 2020 to 31 DEC 2020

SE-4, 03 DEC 2020 to 31 DEC 2020