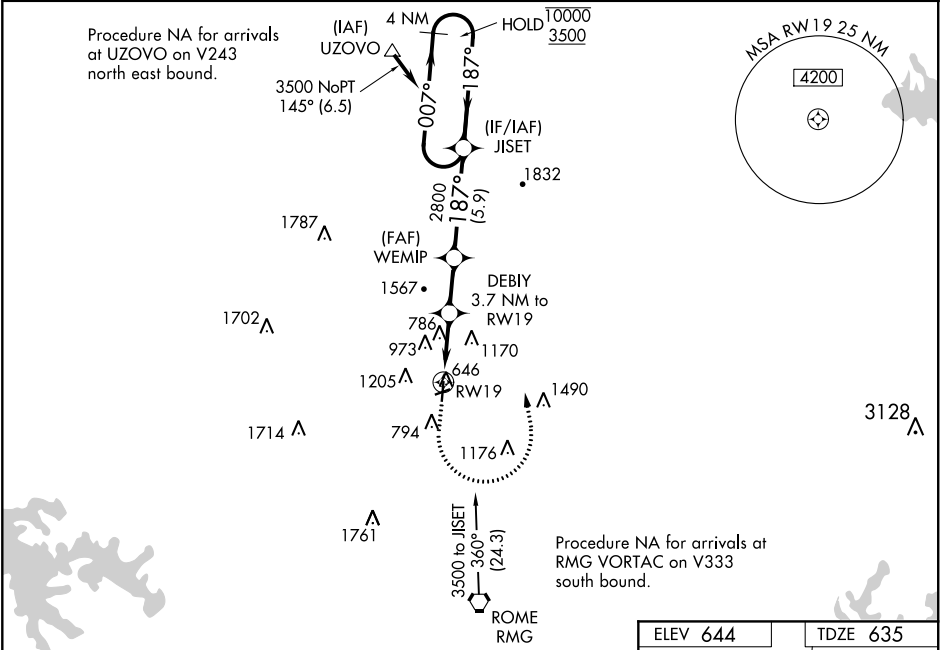


RNP APCH.

Rwy 19 helicopter visibility reduction below ¾ SM NA. For uncompensated Baro-VNAV systems, LNAV/VNAV NA below -10°C or above 54°C. Circling NA west of Rwy 1-19 at night. Circling NA northwest of Rwys 7 and 19.

MISSED APPROACH: Climb to 2000 then climbing left turn to 3500 direct JISET and hold.

ASOS 119.925	ATLANTA CENTER 124.5 270.325	GCO 121.725	UNICOM 123.0 (CTAF) 0
------------------------	--	-----------------------	---------------------------------



4 NM Holding Pattern				2000	3500	JISET
				* LNAV only		
GP 3.00° TCH 45				* 1.2 NM to RWY 19		
5.9 NM				3 NM		
3 NM				2.5 NM		
1.2 NM				1.2 NM		
CATEGORY	A	B	C	D		
LPV DA		1004-1	369 (400-1)			
LNAV/VNAV DA		1015-1	380 (400-1)			
LNAV MDA	1040-1	405 (400-1)	1040-1½	405 (400-1½)		
CIRCLING	1140-1 496 (500-1)	1200-1 556 (600-1)	1480-2½ 836 (900-2½)	1860-3 1216 (1300-3)		

