

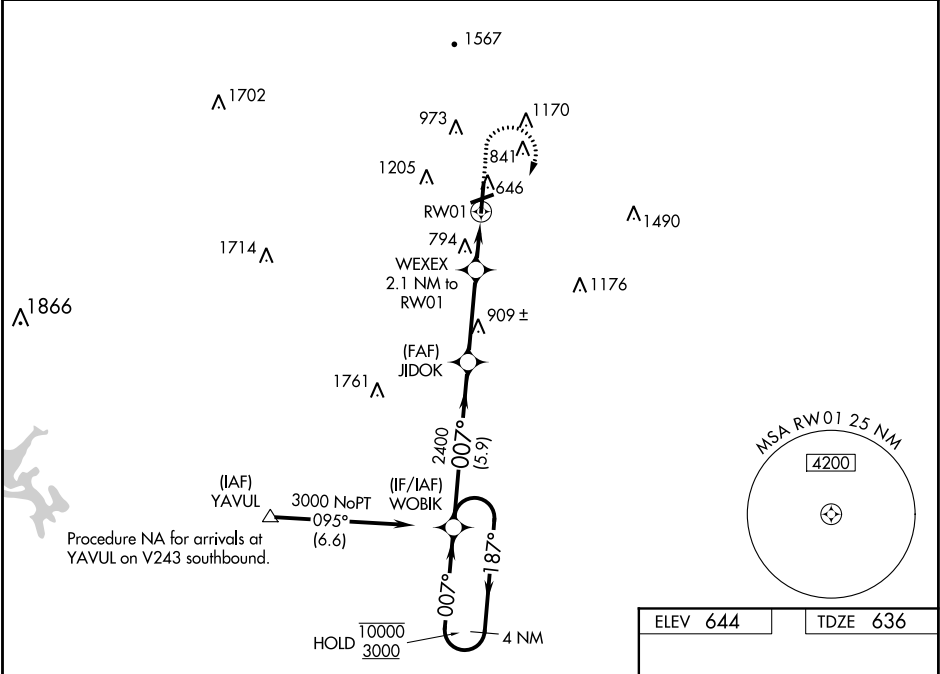
WAAS CH <b>78441</b> <b>W01A</b>	APP CRS <b>007°</b>	Rwy Idg TDZE <b>6006</b> <b>636</b> Apt Elev <b>644</b>
--	------------------------	--

RNAV (GPS) RWY 1

RICHARD B RUSSELL RGNL - J H TOWERS FIELD (RMG)

RNP APCH. ▼ Rwy 1 helicopter visibility reduction below ¾ SM NA. For uncompensated Baro-VNAV systems, LNAV/VNAV NA below -10°C or above 54°C. Circling NA west of Rwy 1-19 at night. Circling NA northwest of Rwy 7 and 19. For inop ALS, increase LPV all Cats visibility to ¾ SM, LNAV/VNAV all Cats visibility to 1 SM, LNAV Cats A/B visibility to 1 SM, and LNAV Cats C/D visibility to 1 ¾ SM.	MALSRL ALS MALSR	MISSED APPROACH: Climb to 1200 then climbing right turn to 3000 direct WOBIK and hold.
---	------------------------	--

ASOS <b>119.925</b>	ATLANTA CENTER <b>124.5 270.325</b>	GCO <b>121.725</b>	UNICOM <b>123.0 (CTAF) 1</b>
------------------------	--	-----------------------	---------------------------------



4 NM

Holding Pattern

1200

3000

WOBIK

10000

3000

←187°

→007°

WOBIK

JIDOK

2400

WEXEX

2.1 NM to RW01

\*1.3 NM to RW01

\*1340

RW01

5.9 NM

3.3 NM

0.8 NM

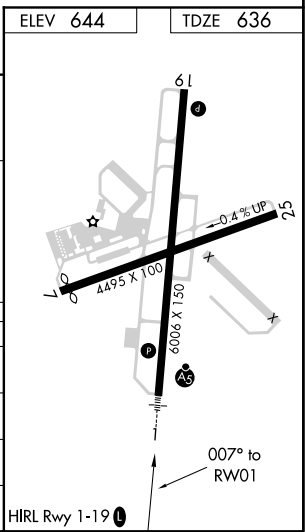
1.3 NM

GP 3.00

TCH 49

\*LNAV only

CATEGORY	A	B	C	D
LPV DA	937-¾ 301 (300-¾)			
LNAV/VNAV DA	994-¾ 358 (400-¾)			
LNAV MDA	1100-¾ 464 (500-¾)		1100-1 464 (500-1)	
CIRCLING	1140-1 496 (500-1)	1200-1 556 (600-1)	1480-2½ 836 (900-2½)	1860-3 1216 (1300-3)



SE-4, 03 DEC 2020 to 31 DEC 2020

SE-4, 03 DEC 2020 to 31 DEC 2020