

LOC I-FTY 109.1	APP CRS 085°	Rwy Idg TDZE Apt Elev	5797 808 841
---------------------------	------------------------	-----------------------------	-----------------------------------------

ILS or LOC RWY 8

FULTON COUNTY AIRPORT-BROWN FIELD (F'TY)

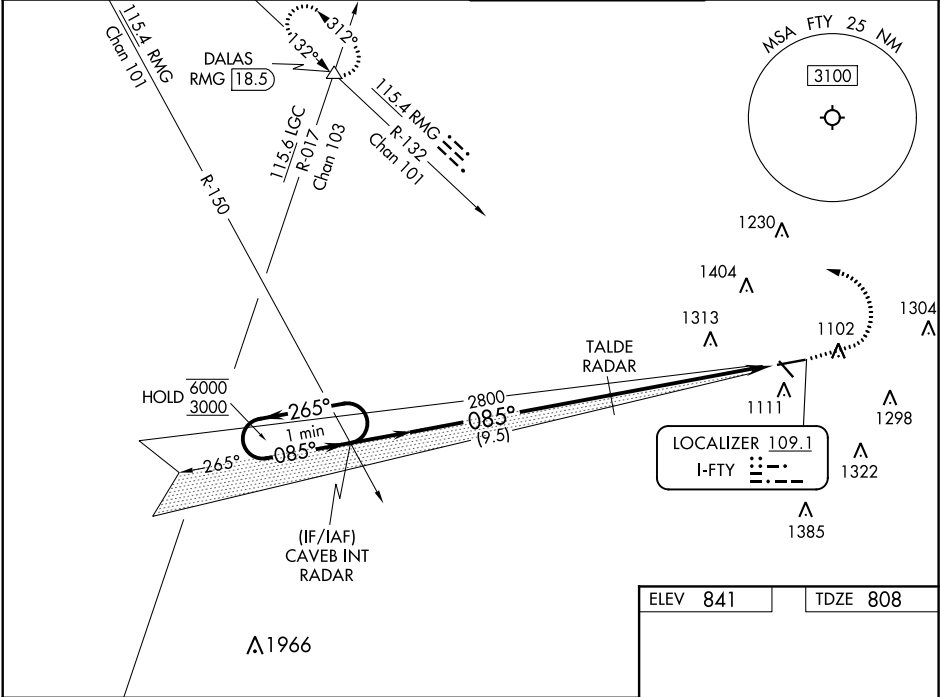
RADAR required to define TALDE.
RADAR required for procedure entry.

⚠ Circling Rwy 14, 32 NA at night. Rwy 8 helicopter visibility reduction below ¾ SM NA.
⚠ For inop ALS, increase S-LOC 8 Cat A visibility to 1 SM, Cat C/D visibility to 2½ SM.
Ridge with trees to 1299' MSL between FAF and runway threshold may be obscured by clouds even with airfield ceiling at or above procedure minimums.

MALSR

MISSED APPROACH: Climb to 1800 then climbing left turn to 4000 on heading 290° and RMG R-132 to DALAS INT/ RMG VORTAC 18.5 DME and hold.

ATIS 120.175	ATLANTA APP CON 121.0 268.7	FULTON COUNTY TOWER 118.45 257.8	GND CON 121.7 348.6
------------------------	---------------------------------------	--------------------------------------------	-------------------------------



One Minute Holding Pattern

CAVEB INT RADAR

TALDE RADAR

DALAS

GS 3.00°
TCH 63

9.5 NM

6.1 NM

1800

4000

hdg 290°

RMG R-132

*LOC only.

085° 6.1 NM from FAF

5797 X 100'

4128 X 100'

TWR 1013

969

CATEGORY	A	B	C	D
S-ILS 8	1058-½ 250 (300-½)			
S-LOC 8	1640-¾	832 (800-¾)	1640-1⅞	832 (800-1⅞)
CIRCLING	1640-1 799 (800-1)	1640-1¼ 799 (800-1¼)	1740-2¾ 899 (900-2¾)	1740-3 899 (900-3)

HIRL Rwy 8-26

MIRL Rwy 14-32

REIL Rws 14, 26 and 32

FAF to MAP 6.1 NM

Knots	60	90	120	150	180
Min:Sec	6:06	4:04	3:03	2:26	2:02

SE-4, 03 DEC 2020 to 31 DEC 2020

SE-4, 03 DEC 2020 to 31 DEC 2020