

LOC/DME I-DCU 110.55 Chan 42 (Y)	APP CRS 185°	Rwy Idg TDZE Apt Elev	6107 592 592
--	------------------------	-----------------------------	---

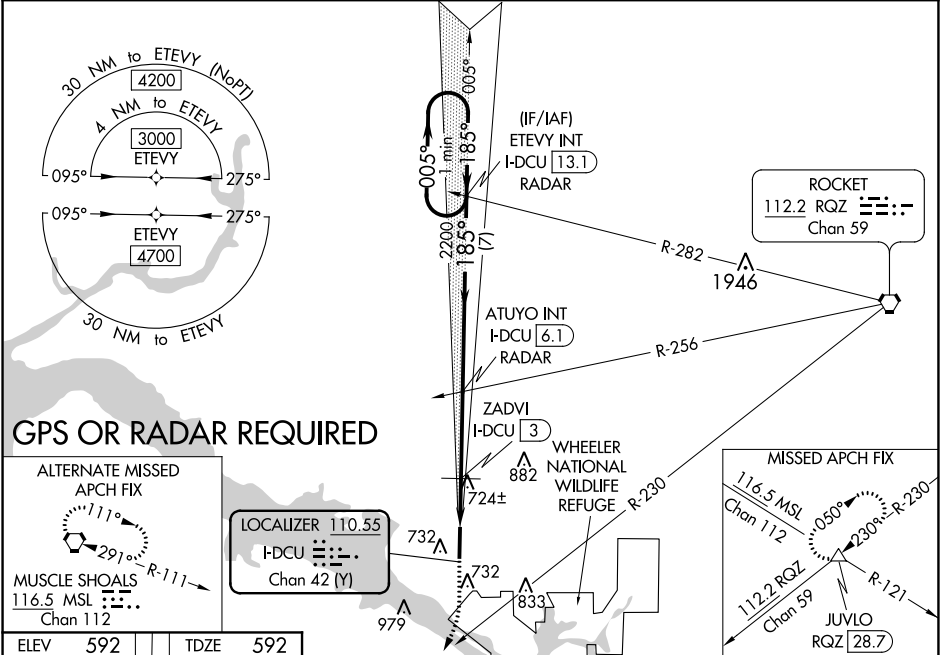
ILS Y OR LOC Y RWY 18
PRYOR FIELD RGNL (DCU)

▼ When local altimeter setting not received, use Huntsville Intl-Carl T Jones Field altimeter setting: increase DA to 817 feet; increase all MDAs 40 feet and S-LOC 18 visibility Cals C and D ½ mile. VDP NA with Huntsville Intl-Carl T Jones Field altimeter setting.

▲

MISSED APPROACH: Climb to 1700 then climbing right turn to 3000 on RQZ VORTAC R-230 to JUVLO INT/ RQZ 28.7 DME and hold.

ASOS 118.375	HUNTSVILLE APP CON ★ 118.05 239.0	UNICOM 123.075 (CTAF) 0
------------------------	---	-----------------------------------



ELEV 592	TDZE 592	1700	3000	JUVLO	*1180 when using Huntsville Intl-Carl T Jones Field altimeter setting.	ETEVI INT I-DCU [13.1] 1 Minute Holding Pattern
185° 4.9 NM from FAF		*LOC only.		ATUYO INT I-DCU [6.1] RADAR	005° 185° 3000	
81		*I-DCU [1.2]		ZADVI I-DCU [3] 2200	GS 3.00° TCH 47	
100 x 2019		1.1 NM 0.7 NM 3.1 NM 7 NM				
636						
36						
HIRL Rwy 18-36 0						
REIL Rwy 18 and 36 0						
FAF to MAP 4.9 NM						
Knots	60	90	120	150	180	
Min:Sec	4:54	3:16	2:27	1:58	1:38	

SE-4, 03 DEC 2020 to 31 DEC 2020

SE-4, 03 DEC 2020 to 31 DEC 2020