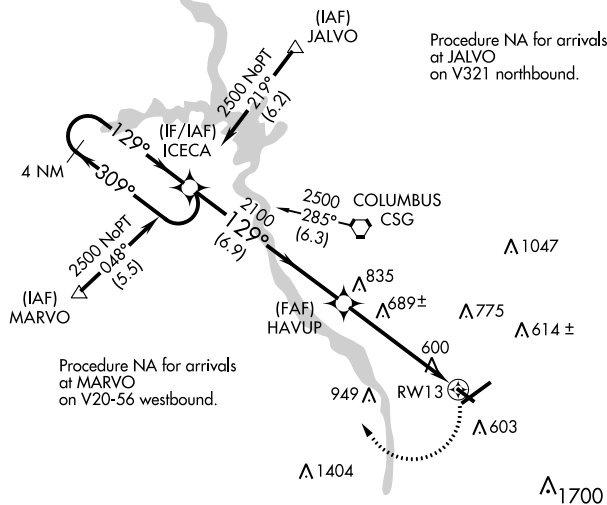


RNAV (GPS) RWY 13  
COLUMBUS (CSG)

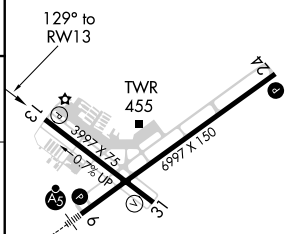
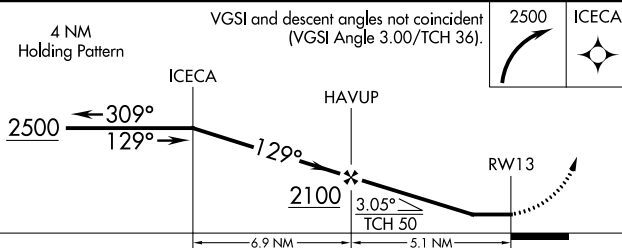
Straight-in Rwy 13 NA at night, Circling Rwy 13, 31 NA at night.  
Rwy 13 helicopter visibility reduction below 1 SM NA.

MISSED APPROACH: Climbing right turn to 2500 direct ICECA and hold.

UNICOM  
122.95

A circular scale for the MSARW13 25 NM instrument. The scale has a central dial with a pointer indicating a value of 3500. The text "MSARW13 25 NM" is written around the top edge of the circle.

ELEV 397	<b>D</b>	TDZE 397
----------	----------	----------



CATEGORY	A	B	C	D
INAV MDA	940-1	543 (600-1)	940-1 $\frac{5}{8}$	543 (600-1 $\frac{5}{8}$ )
CIRCLING	940-1	543 (600-1)	940-1 $\frac{5}{8}$ 543 (600-1 $\frac{5}{8}$ )	960-2 563 (600-2)

REIL Rwy 24 **L**  
HIRL Rwy 6-24 **L**  
MIRL Rwy 13-31 **L**  
REIL Rwy 13 and 31

SE-4, 03 DEC 2020 to 31 DEC 2020

SE-4, 03 DEC 2020 to 31 DEC 2020