

VOR RWY 6

VOR/DME OZR	APCH CRS	Rwy Idg
111.2	056°	4546
Chan 49	TDZE	298
	Arprt Elev	301

AL-577 [USA]

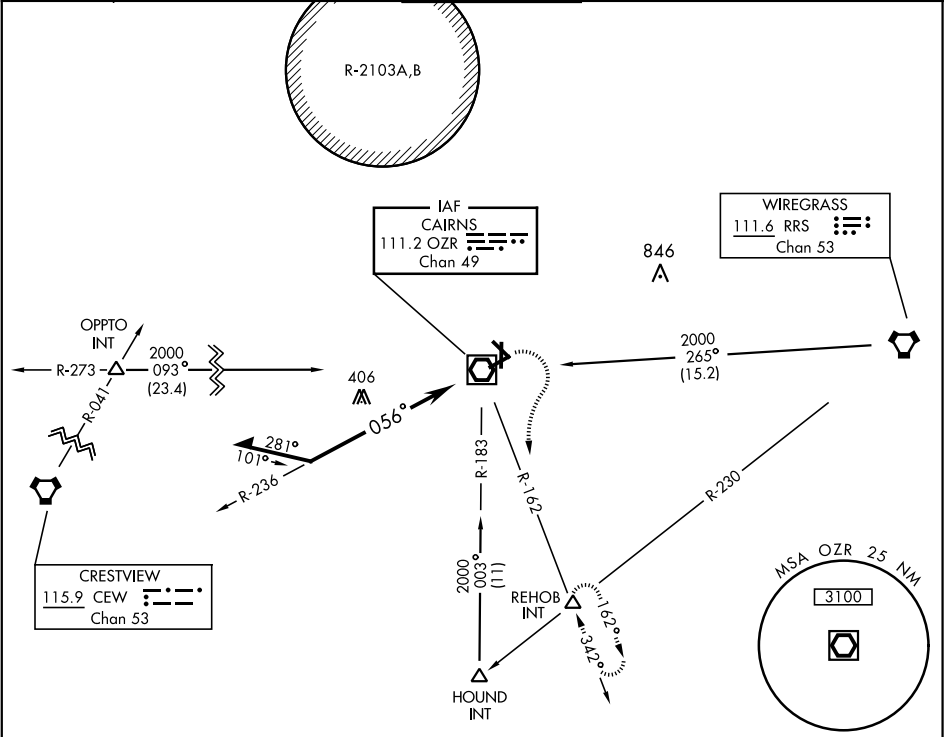
CAIRNS AAF (KOZR)

▼ Visibility reduction by helicopters NA.
* When ALS inop, increase CAT AB RVR to 50, vis to 1 mile; CAT CD RVR to 60, vis to 1¼ miles.



MISSED APPROACH: Climbing right turn to 2000 via OZR VOR/DME R-162 to REHOB INT and hold; or when directed by ATC, climbing left turn to 2000 heading 290° within 10 NM (RADAR required).

ATIS	CAIRNS APP CON	CAIRNS TOWER *	GND CON	CLNC DEL	PAR
111.2	125.4 327.125 021°-120°	135.2 (CTAF)	121.9	118.075	
316.15	133.75 270.35 121°-219°	248.55	288.25	380.1	
	133.45 239.275 220°-340°				
	121.1 319.25 341°-020°				



<div> <div>2000</div> <div> <div>OZR</div> <div>R-162</div> </div> </div> <div> <div>REHOB</div> <div>INT</div> <div>△</div> </div>		Remain within 10 NM	
<div> <div>VOR/DME</div> <div>2000</div> <div>236°</div> <div>056°</div> </div>			
<div> <div>CATEGORY</div> <div>A</div> <div>B</div> <div>C</div> <div>D</div> </div>			
<div> <div>S-6 *</div> <div>740/40</div> <div>442</div> <div>(500-¾)</div> </div>			
<div> <div>CIRCLING</div> <div>780-1</div> <div>479 (500-1)</div> <div>820-1</div> <div>519 (600-1)</div> <div>860-1½</div> <div>559 (600-1½)</div> <div>900-2</div> <div>599 (600-2)</div> </div>			

ELEV 301

TDZE 298

CHINOOK HILL PAD

TWR 430

422

5025+

4546 x 150

36

056° to VOR/DME

HIRL Rwy 6-24

MIRL Rwy 18-36

VOR RWY 6

SE-4, 03 DEC 2020 to 31 DEC 2020

SE-4, 03 DEC 2020 to 31 DEC 2020