

VOR RWY 24

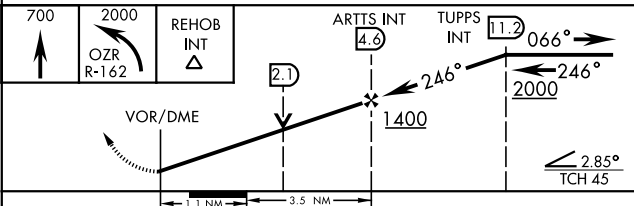
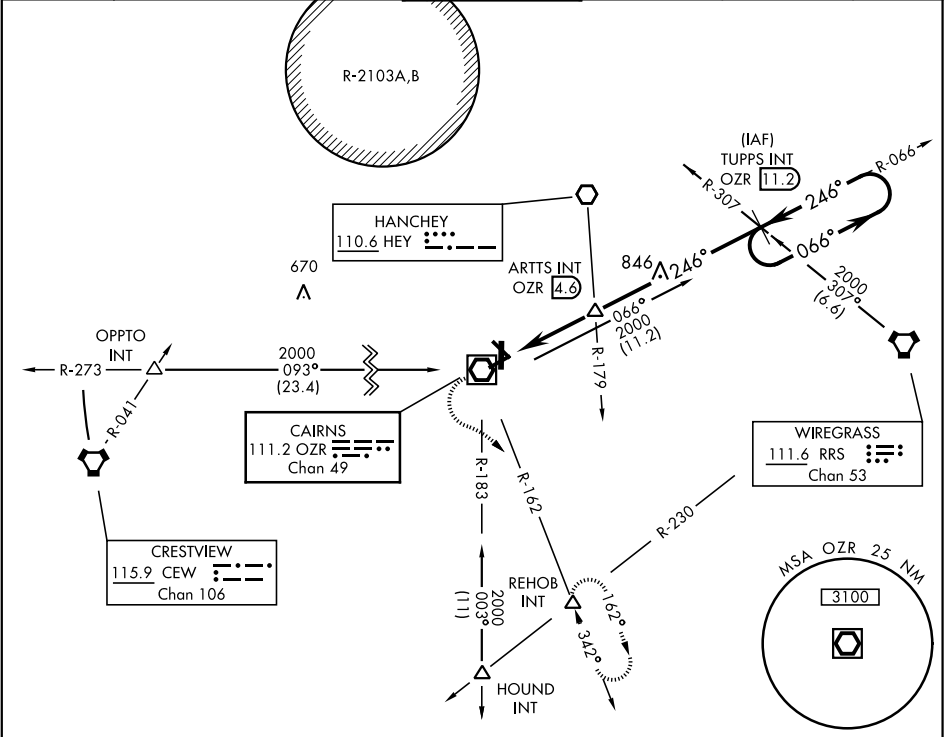
VOR/DME OZR	APCH CRS	Rwy Idg
111.2	246°	4546
Chan 49		TDZE 298
		Arprt Elev 301

AL-577 [USA]

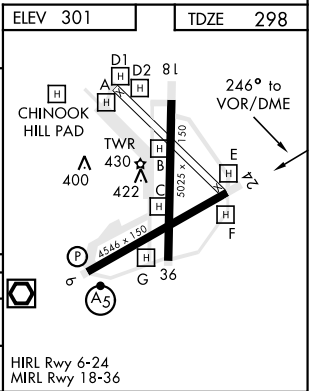
CAIRNS AAF (KOZR)

**MISSED APPROACH:** Climb to 700 then climbing left turn to 2000 via OZR  
VOR/DME R-162 to REHOB INT and hold; or when directed by ATC, climb to 700 then climbing right turn heading 290° to 2000 within 10 NM (RADAR required).

ATIS	CAIRNS APP CON			CAIRNS TOWER ★	GND CON	CLNC DEL	PAR
111.2	125.4	327.125	021°-120°	135.2 (CTAF)	121.9	118.075	
316.15	133.75	270.35	121°-219°	248.55	288.25	380.1	
	133.45	239.275	220°-340°				
	121.1	319.25	341°-020°				



CATEGORY	A	B	C	D
S-24	680-1	382	(400-1)	680-1¼
				382 (400-1¼)
CIRCLING	780-1	820-1	860-1½	900-2
	479 (500-1)	519 (600-1)	559 (600-1½)	599 (600-2)



VOR RWY 24

SE-4, 03 DEC 2020 to 31 DEC 2020

SE-4, 03 DEC 2020 to 31 DEC 2020