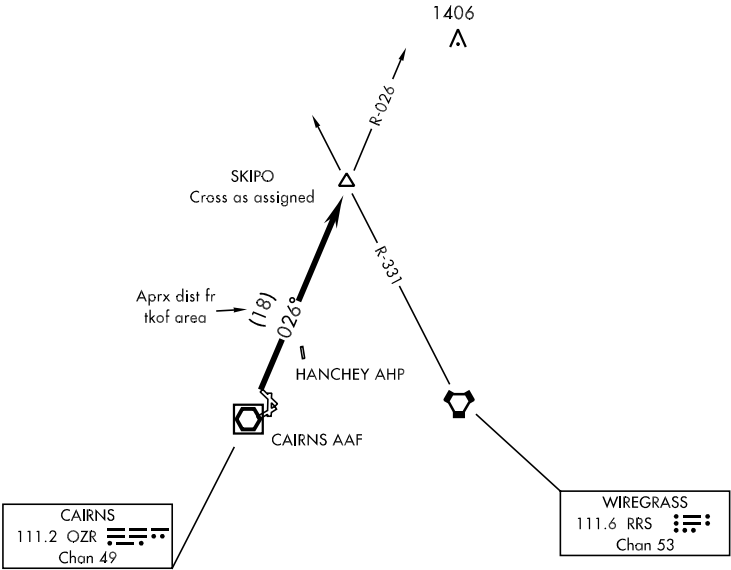


ATIS 111.2 316.15
CLNC DEL
118.075 380.1
GND CON
121.9 288.25
CAIRNS TOWER ★
135.2 (CTAF) 248.55
DEP CON
125.4 327.125
JACKSONVILLE CENTER
120.2 346.4

SL-577 [USA]

RADAR REQUIRED



DEPARTURE ROUTE DESCRIPTION

TAKE-OFF RWY 6 or RWY 18: Climbing left turn heading 360°
TAKE-OFF RWY 24: Climbing right turn heading 050°
TAKE-OFF RWY 36: Climb heading 360°
TAKE-OFF PAD D1: Climb heading 015°
TAKE-OFF PAD D2: Climb heading 360°
Maintain 2000, expect clearance to requested altitude/flight level ten (10) minutes after departure.
.... Intercept OZR VOR/DME R-026 to SKIPO INT.