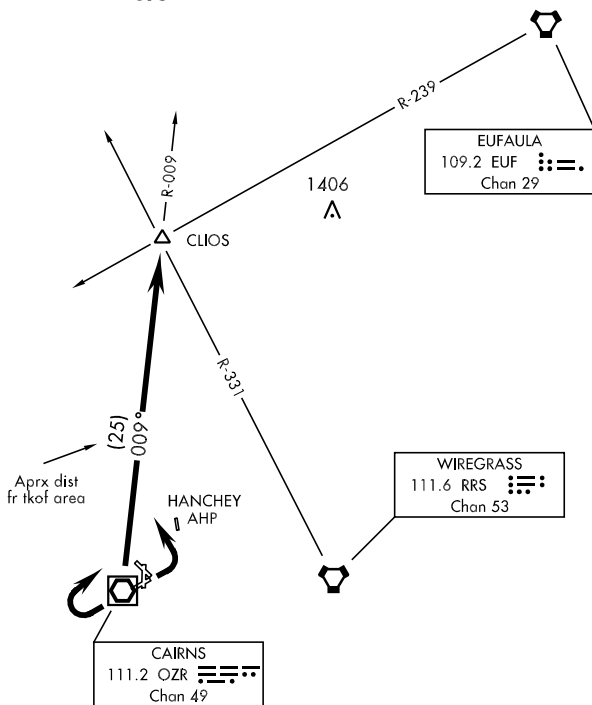


CAIRNS AAF (KOZR)
FORT RUCKER, ALABAMA

RADAR REQUIRED



TAKE-OFF RWY 6 or RWY 18: Climbing left turn heading 330°
TAKE-OFF RWY 24: Climbing right turn heading 050°
TAKE-OFF RWY 36: Climb on heading 350°
TAKE-OFF PAD D1: Climb on heading 350°
TAKE-OFF PAD D2: Climb on heading 350°
Maintain 2000, expect clearance to requested altitude/flight level ten (10) minutes after departure.

.... Intercept OZR VOR/DME R-009 to CLIOS INT.

FORT RUCKER, ALABAMA
CAIRNS AAF (KOZR)

SE-4, 03 DEC 2020 to 31 DEC 2020