

VOR RWY 15

VORTAC MCN <b>114.2</b> Chan <b>89</b>	APCH CRS <b>134°</b>	Rwy ldg <b>12,001</b> THRE <b>293</b> Arprt Elev <b>294</b>
--	-------------------------	---

AL-442 [USAF]

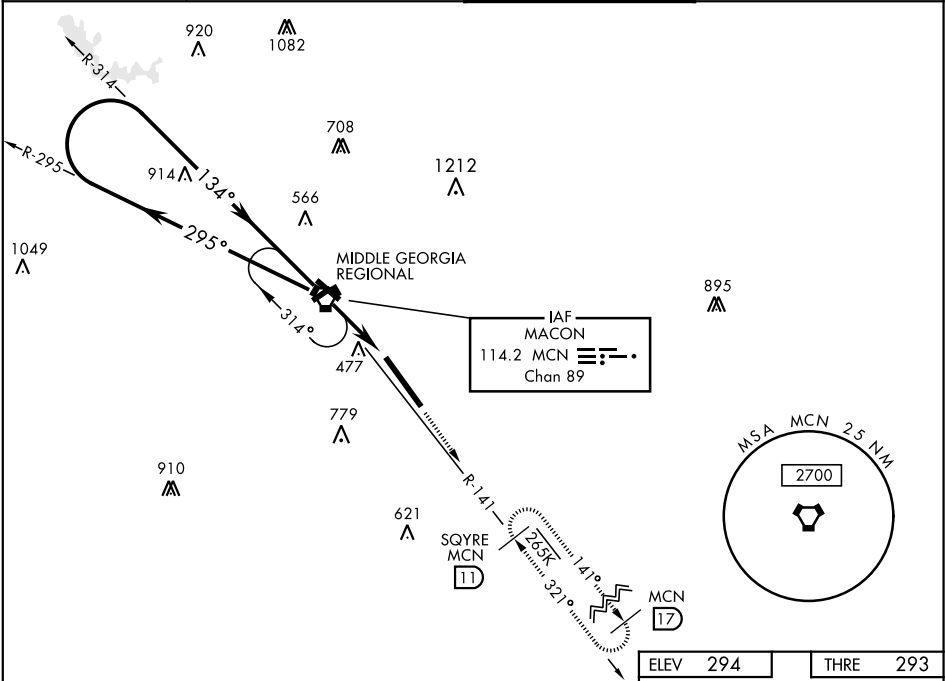
ROBINS AFB (KWRB)

\*When ALS inop, increase CAT AB RVR to 55 and vis to 1 mile, CAT CDE vis to 1½ miles.  
\*\*Circling not authorized W of Rwy 15-33.

ALSF-1

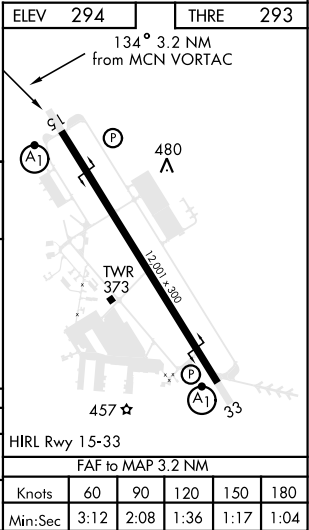
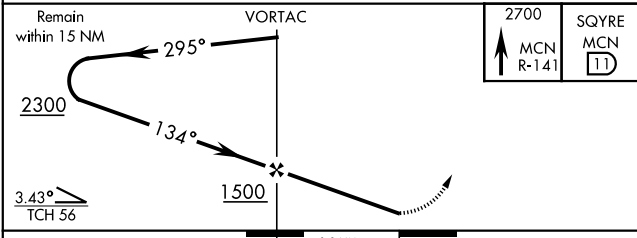
MISSED APPROACH: Climb to 2700 out MCN R-141 to SQYRE and hold.

ATIS <b>119.475 273.475</b>	ATLANTA APP CON <b>124.2 279.6</b>	ROBINS TOWER <b>133.225 257.975</b>	GND CON <b>121.85 275.8</b>
--------------------------------	---------------------------------------	--	--------------------------------



DME or RADAR REQUIRED

EMERG SAFE ALT 100 NM 3700



CATEGORY	A	B	C	D	E
S-15 *	760/40 467 (500-¾)		760/50 467 (500-1)		
CIRCLING**	780-1 486 (500-1)		840-1½ 546 (600-1½)	960-2 666 (700-2)	1100-2¾ 806 (900-2¾)

HIRL Rwy 15-33					
FAF to MAP 3.2 NM					
Knots	60	90	120	150	180
Min:Sec	3:12	2:08	1:36	1:17	1:04

VOR RWY 15

SE-4, 03 DEC 2020 to 31 DEC 2020

SE-4, 03 DEC 2020 to 31 DEC 2020