

HI-VOR/DME or TACAN RWY 15

VORTAC MCN 114.2 Chan 89	APCH CRS 134°	Rwy Idg 12,001 THRE 293 Arprt Elev 294
----------------------------------------------	-------------------------	-------------------------------------------------------------------

JAL-442 [USAF]

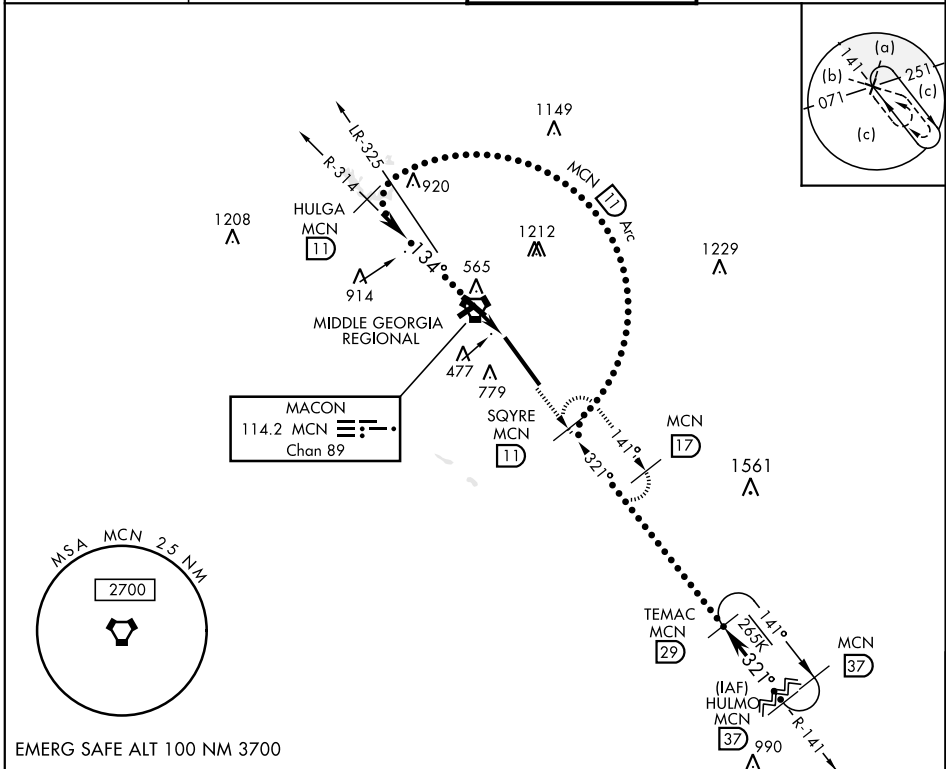
ROBINS AFB (KWRB)

* When ALS inop, increase CAT C vis to 1½ miles, CAT D vis to 1¾ miles, and CAT E vis to 2 miles.
** Circling not authorized W of Rwy 15-33.



MISSED APPROACH: Climb to 2700 out MCN R-141 to SQYRE and hold.

ATIS 119.475 273.475	ATLANTA APP CON 124.2 279.6	ROBINS TOWER 133.225 257.975	GND CON 121.85 275.8
--------------------------------	---------------------------------------	----------------------------------------	--------------------------------



<p>VGSI and descent angles not coincident</p> <p>HULGA R-314</p> <p>SQYRE R-141</p> <p>HULMO R-141</p> <p>VORTAC</p> <p>HEKNI</p> <p>16,000</p> <p>4000</p> <p>1500</p> <p>3.41° TCH 55</p> <p>3 NM</p> <p>2</p>				<p>2700</p> <p>MCN R-141</p> <p>SQYRE MCN 11</p>	<p>ELEV 294</p> <p>THRE 293</p> <p>134° 3.2 NM from MCN VORTAC</p> <p>480</p> <p>1200-1300</p> <p>TWR 373</p> <p>HIRL Rwy 15-33 ☆457</p> <p>FAF to MAP 3.0 NM</p>
CATEGORY	C	D	E		
S-15 *	760/50	467	(500-1)		
CIRCLING **	840-1½ 546 (600-1½)	960-2 666 (700-2)	1100-2¾ 806 (900-2¾)		
				Knots	120 140 160 180 200
				Min:Sec	1:30 1:17 1:08 1:00 0:54

HI-VOR/DME or TACAN RWY 15