

# HI-ILS or LOC RWY 15

LOC I-RJM <b>111.7</b>	APCH CRS <b>146°</b>	Rwy ldg <b>12,001</b> THRE <b>293</b> Arpt Elev <b>294</b>	JAL-442 [USAF]	ROBINS AFB (KWRB)
---------------------------	-------------------------	--	----------------	-------------------

\*When ALS inop, increase CAT CDE RVR to 40 and vis to ¾ mile.

\*\*When ALS inop, increase CAT CDE vis to 1¾ miles.

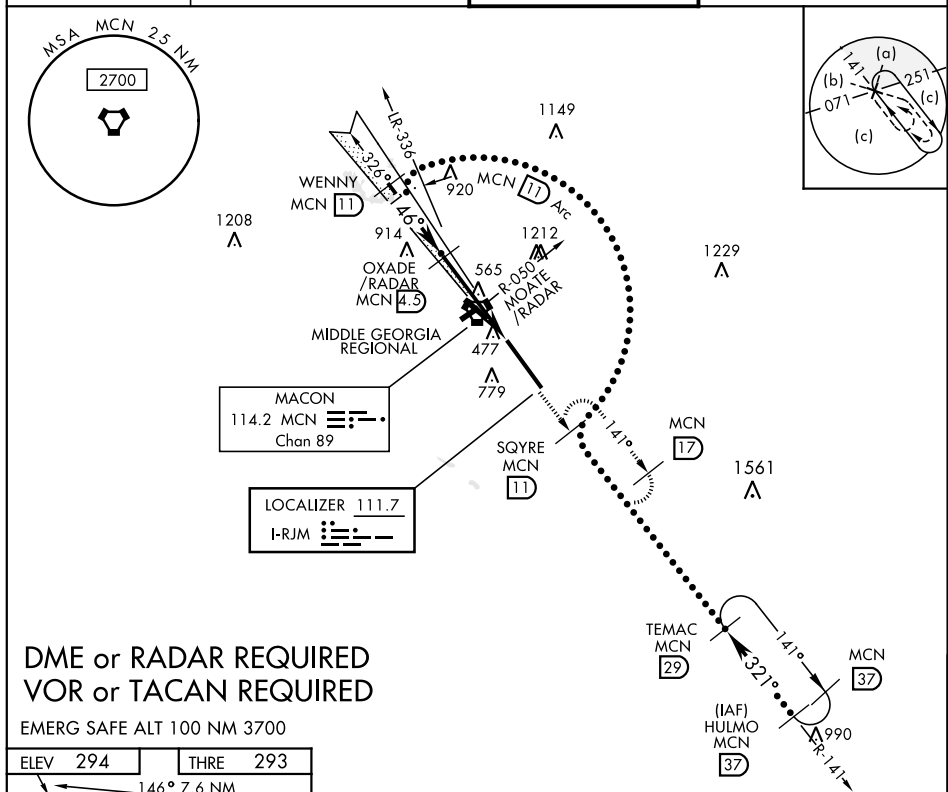
\*\*\*Circling not authorized W of Rwy 15-33.

ALSF-1



MISSED APPROACH: Climb to 2700 out MCN R-141 to SQYRE and hold.

ATIS <b>119.475 273.475</b>	ATLANTA APP CON <b>124.2 279.6</b>	ROBINS TOWER <b>133.225 257.975</b>	GND CON <b>121.85 275.8</b>
--------------------------------	---------------------------------------	--	--------------------------------



## DME or RADAR REQUIRED VOR or TACAN REQUIRED

EMERG SAFE ALT 100 NM 3700

ELEV 294	THRE 293
<p>146° 7.6 NM from FAF</p> <p>480 A</p> <p>HIRL Rwy 15-33</p> <p>TWR 373</p> <p>1200 x 300</p> <p>☆457</p> <p>33</p> <p>FAF to MAP 7.1 NM</p>	
Knots	120 140 160 180 200
Min:Sec	3:33 3:03 2:40 2:22 2:08
C CIRCLING	

WENNY Intcp Lczt		SQYRE R-141 11		HULMO R-141 37		2700 MCN R-141		SQYRE MCN 11	
4000		11 Arc		4000		16,000			
146°		OXADE /RADAR		321°					
2600		MOATE †MCN R-050 /RADAR		FONOP 2.6		†LOC only		GS 2.70° TCH 54	
1280		7.1 NM		.5 NM					
CATEGORY	C	D	E						
S-ILS 15 *	493/24		200 (200-½)						
S-LOC 15 **	680/35		387 (400-¾)						
840-1½ 546 (600-1½)	960-2 666 (700-2)		1100-2¾ 806 (900-2¾)						