

VALDOSTA, GEORGIA

RNAV (GPS) RWY 36R

APCH CRS	Rwy Idg	9300
003°	TDZE	217
	Arpt Elev	233

AL-435 (USAF)

MOODY AFB (KVAD)

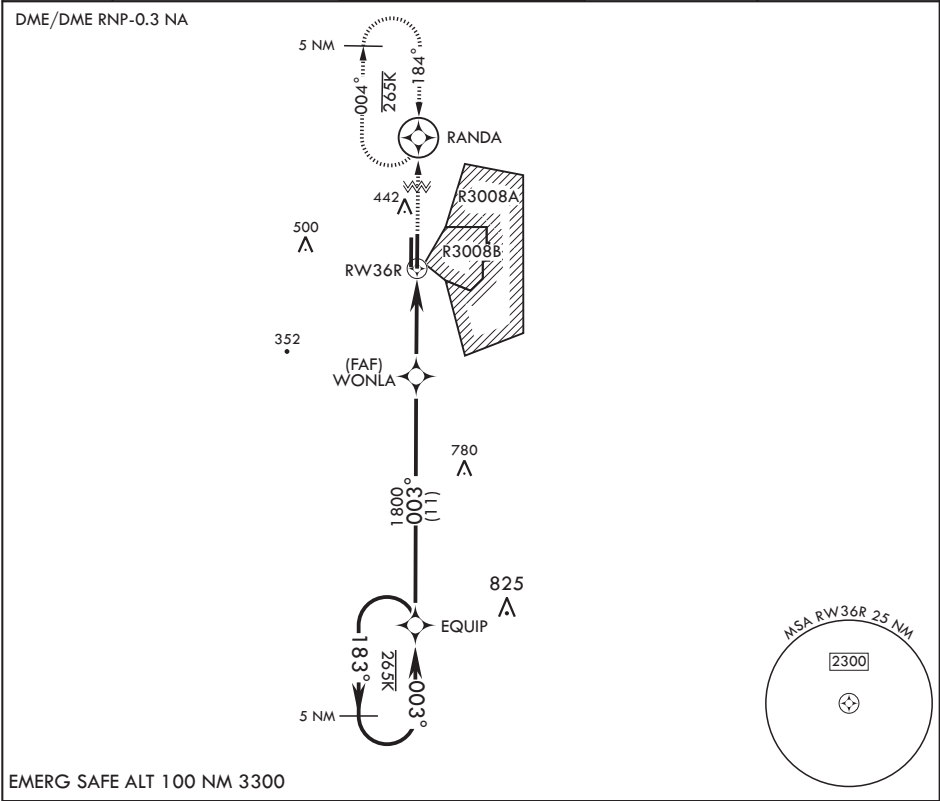
⚠ * When ALS inop, increase CAT AB RVR to 55 and vis to 1 mile, CAT CDE vis to 1 3/8 miles.

ALSF-1



MISSED APPROACH: Climb to 3000 direct to RANDA and hold.

ATIS★ 273.5	VALDOSTA APP CON 126.6 285.6	TOWER★ 128.45 (CTAF) 257.625	GND CON 138.95 275.8	CLNC DEL 120.625 296.7
----------------	---------------------------------	---------------------------------	-------------------------	---------------------------



3000

183°

003°

EQUIP

WONLA

1800

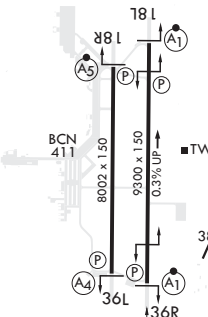
1.3 NM to RW36R

4.8 NM

RW36R

3.05° ≥ TCH 53

3000 RANDA ELEV 233 TDZE 217



CATEGORY	A	B	C	D	E
LNAV MDA*	680/24 463 (500-1/2)		680/50 463 (500-1)		
C CIRCLING	760-1 527 (600-1)		760-1 1/2 527 (600-1 1/2)	800-2 567 (600-2)	1060-3 827 (900-3)

HIRL all Rwys

VALDOSTA, GEORGIA

30°58'N - 83°12'W

MOODY AFB (KVAD)

Amdt 1 10OCT19

RNAV (GPS) RWY 36R

SE-4, 03 DEC 2020 to 31 DEC 2020

SE-4, 03 DEC 2020 to 31 DEC 2020