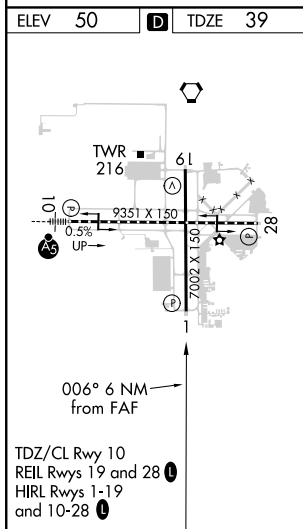
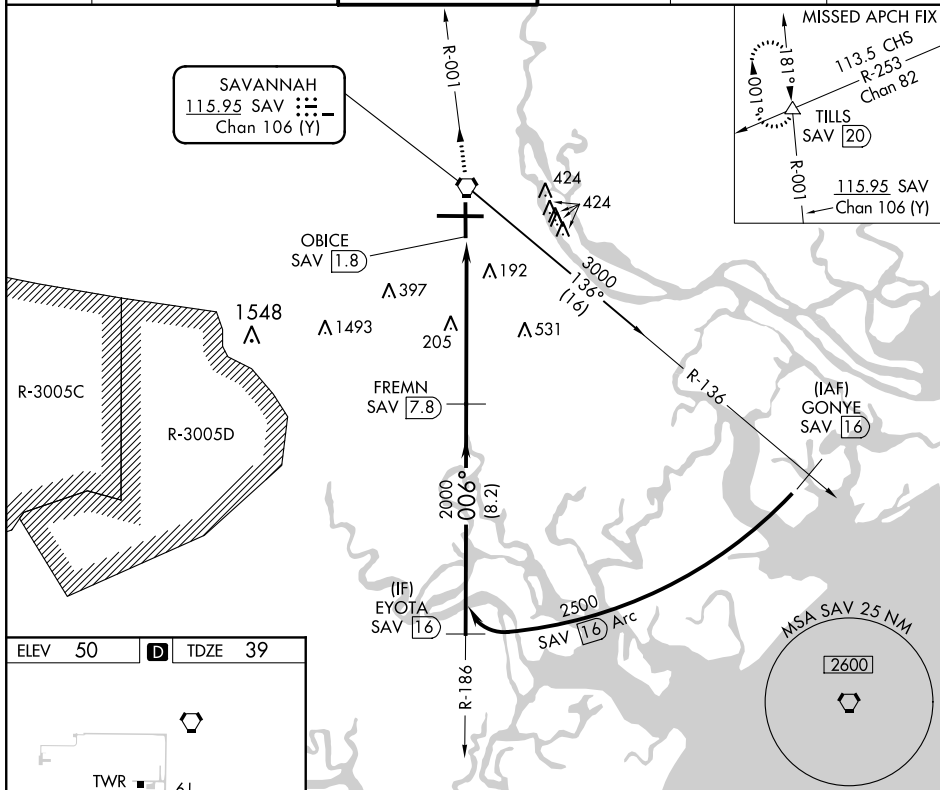


VOR/DME or TACAN RWY 1
SAVANNAH/HILTON HEAD INTL (SAV)

MISSED APPROACH: Climb to 4000 direct SAV VORTAC and via SAV R-001 to TILLS INT/SAV 20 DME and hold.

ATIS 123.75	SAVANNAH APP CON★ 120.4 353.775	SAVANNAH TOWER★ 119.1(CTAF) 0 257.8	GND CON 121.9 348.6	CLNC DEL 119.55 291.775	UNICOM 122.95
----------------	------------------------------------	----------------------------------------	------------------------	----------------------------	------------------



4000

SAV

SAV R-001

TILLS

SAV VORTAC

OBICE SAV 1.8

SAV 3.1

FREMN SAV 7.8

006°

2500

Procedure Turn NA

2.98°

TCH 74

1.3 NM

4.7 NM

8.2 NM

CATEGORY	A	B	C	D	E
S-1	520/55 481 (500-1)		520-1 $\frac{3}{8}$ 481 (500-1 $\frac{3}{8}$)	520-1 $\frac{1}{2}$ 481 (500-1 $\frac{1}{2}$)	520-1 $\frac{1}{4}$ 481 (500-1 $\frac{1}{4}$)
CIRCLING	520-1 470 (500-1)		740-2 690 (700-2)	740-2 $\frac{1}{4}$ 690 (700-2 $\frac{1}{4}$)	900-3 850 (900-3)

SE-4, 03 DEC 2020 to 31 DEC 2020