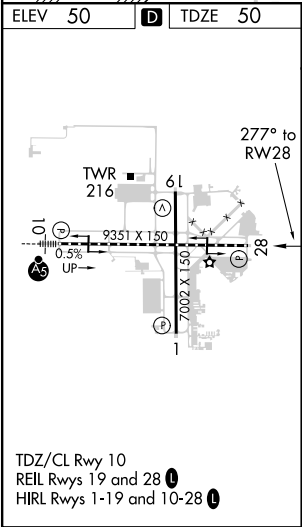
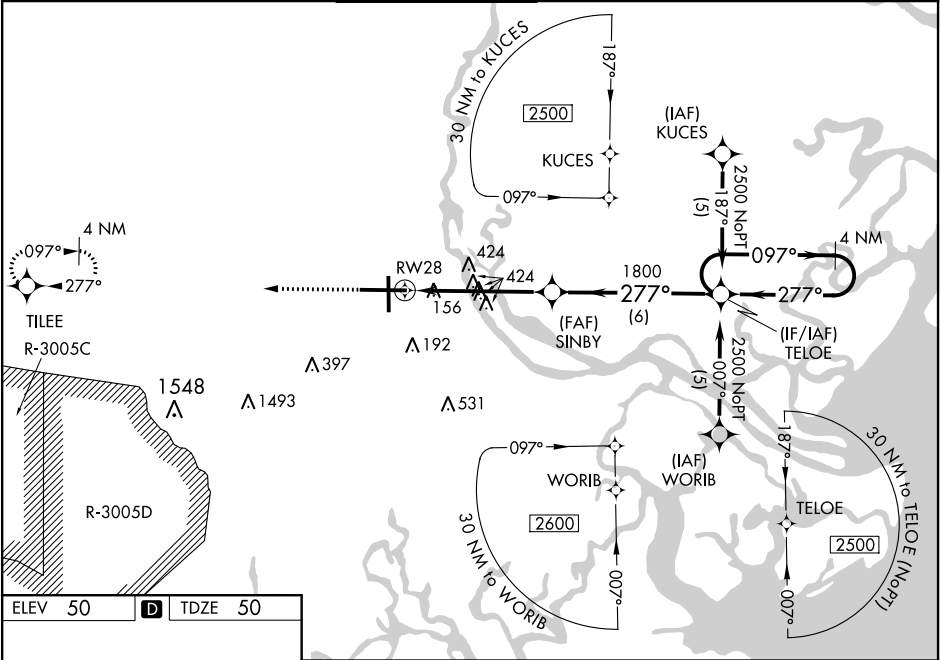


WAAS CH <b>40015</b> <b>W28A</b>	APP CRS <b>277°</b>	Rwy Idg <b>9351</b> TDZE <b>50</b> Apt Elev <b>50</b>
--	------------------------	---

**RNAV (GPS) Z RWY 28**  
SAVANNAH/HILTON HEAD INTL (SAV)

RNP APCH.		MISSED APPROACH: Climb to 2600 direct TIEE and hold.
<div><div>▼</div><div>▲</div></div>	For uncompensated Baro-VNAV systems, LNAV/VNAV NA below -15°C (5°F) or above 49°C (120°F).	

ATIS <b>123.75</b>	SAVANNAH APP CON* <b>125.3 371.875</b>	SAVANNAH TOWER* <b>119.1 (CTAF) 257.8</b>	GND CON <b>121.9 348.6</b>	CLNC DEL <b>119.55 291.775</b>	UNICOM <b>122.95</b>
-----------------------	---	--	-------------------------------	-----------------------------------	-------------------------



2600

↑

TILEE

✦

VGSI and RNAV glidepath not coincident  
(VGSI Angle 3.00/TCH 66).

\*LNAV only.

TELOE

4 NM Holding Pattern

097° →

← 277°

2500

GP 3.00°  
TCH 52

1800

277°

1800

277°

1.8 NM

3.5 NM

6 NM

1.8 NM to RW28

RW28

CATEGORY	A	B	C	D
LPV DA	307-1 257 (300-1)			
LNAV/VNAV DA	431-1¼ 381 (400-1¼)			
LNAV MDA	680-1	630 (700-1)	680-1¾ 630 (700-1¾)	
CIRCLING	680-1	630 (700-1)	740-2 690 (700-2)	740-2¼ 690 (700-2¼)

SE-4, 03 DEC 2020 to 31 DEC 2020

SE-4, 03 DEC 2020 to 31 DEC 2020