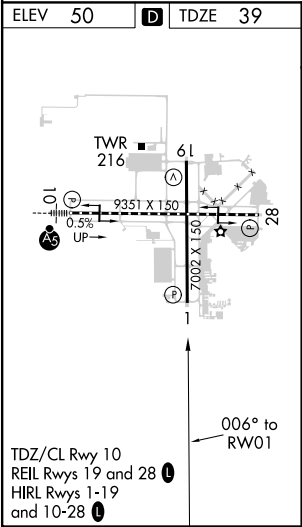
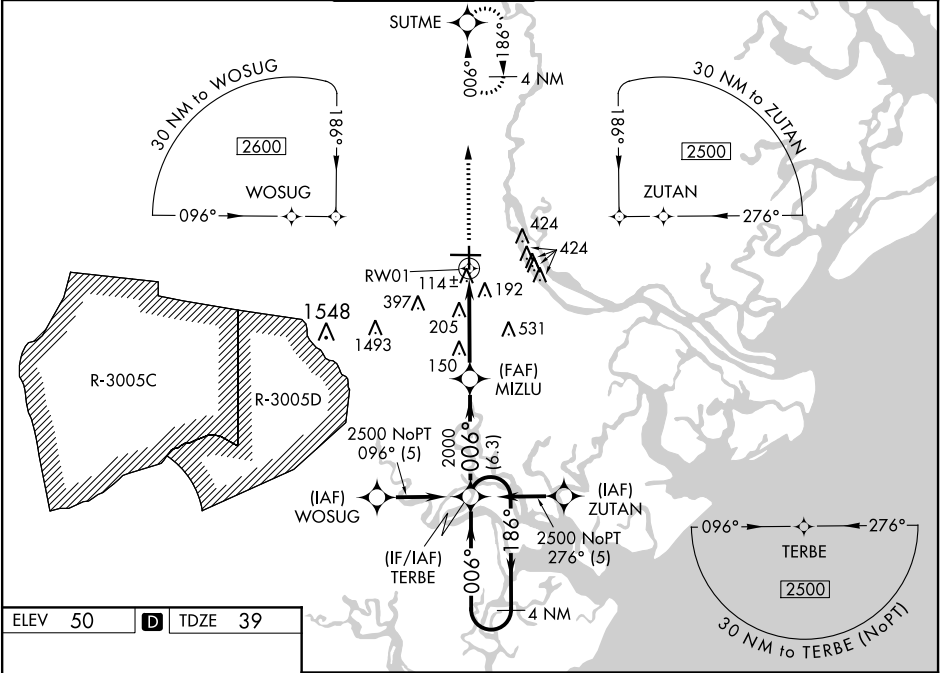


WAAS CH 45515 W01A	APP CRS 006°	Rwy Idg 7002 TDZE 39 Apt Elev 50
--	------------------------	---

RNAV (GPS) RWY 1
SAVANNAH/HILTON HEAD INTL (SAV)

RNP APCH.		MISSED APPROACH: Climb to 2500 direct SUTME and hold.	
▼ ▲ For uncompensated Baro-VNAV systems, LNAV/VNAV NA below -15°C (5°F) or above 49°C (120°F).			

ATIS 123.75	SAVANNAH APP CON★ 120.4 353.775	SAVANNAH TOWER★ 119.1(CTAF) 0 257.8	GND CON 121.9 348.6	CLNC DEL 119.55 291.775	UNICOM 122.95
-----------------------	---	---	-------------------------------	-----------------------------------	-------------------------



2500

↑

SUTME

✦

VGSI and RNAV glidepath not coincident.
(VGSI Angle 3.00/TCH 74).

TERBE

4 NM
Holding Pattern

*LNAV only.

MIZLU

2000

186° →

← 006°

2500

*1.3 NM to RW01

006°

2000

RW01


1.3 NM

4.6 NM

6.3 NM

GP 3.00°

TCH 57

CATEGORY	A	B	C	D
LPV DA	239/40 200 (200-¾)			
LNAV/VNAV DA	384/60 345 (400-1¼)			
LNAV MDA	520/55	481 (500-1)	520-1½	481 (500-1½)
 CIRCLING	520-1	470 (500-1)	740-2 690 (700-2)	740-2¼ 690 (700-2¼)

SE-4, 03 DEC 2020 to 31 DEC 2020

SE-4, 03 DEC 2020 to 31 DEC 2020