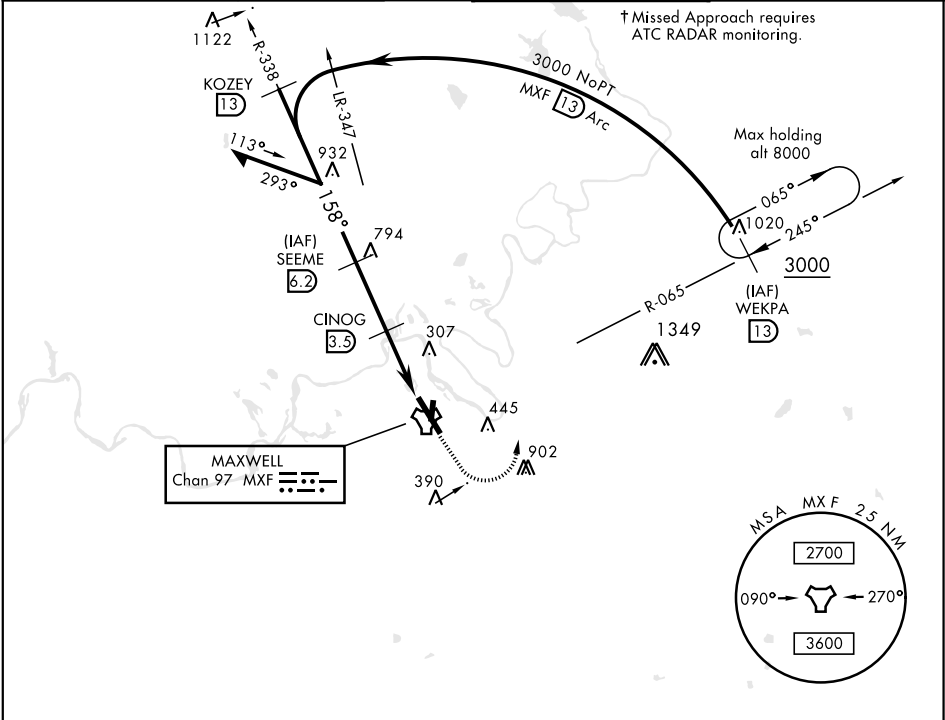


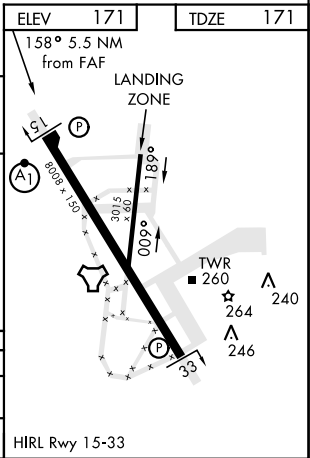
TACAN RWY 15

TACAN MXF Chan 97	APCH CRS 158°	Rwy ldg 8008 TDZE 171 Arpt Elev 171	AL-274 [USAF]	MAXWELL AFB (KMXF)
▼ * When ALS inop, increase CAT AB RVR to 55 and vis to 1 mile, CAT CDE RVR to 60 and vis to 1½ miles. ** Circling not authorized E of Rwy 15-33.			ALSF-1 A1	† MISSED APPROACH: Climb to 1000, then climbing left turn to 3000 to intercept MXF TACAN R-065 outbound to 13 DME (WEKPA) and hold.
ATIS ★ 134.7 269.9	MONTGOMERY APP CON 121.2 269.05	MAXWELL TOWER ★ 118.15 253.5	GND CON 127.15 289.4	



EMERG SAFE ALT 100 NM 5000

Remain within 15 NM				
CINOG to RWY 15 3.08° TCH 51				
CINOG 3.5				
SEEME 6.2				
KOZEY 13				
TACAN				
CUGOV 1.9				
WEKPA R-065 13				
MXF R-065				
1000				
3000				
2000				
1100				
2.7 NM				
2.6 NM				
2 NM				
CATEGORY	A	B	C	D
S-15 *	580/24	409 (500-½)	580/40	409 (500-¾)
CIRCLING **	680-1	509 (600-1)	740-1½ 569 (600-1½)	940-2½ 769 (800-2½)



TACAN RWY 15

SE-4, 03 DEC 2020 to 31 DEC 2020

SE-4, 03 DEC 2020 to 31 DEC 2020