

WAAS  
CH **50100**  
**W10A**

APP CRS  
**097°**


Rwy Idg  
TDZE  
Apt Elev

**9020**  
**219**  
**221**

**RNAV (GPS) RWY 10**

MONTGOMERY RGNL (DANNELLY FIELD) (MGM)

RNP APCH.  
For uncompensated Baro-VNAV systems, LNAV/VNAV NA below -8°C (18°F) or above 54°C (130°F). For inop MALSR, increase LPV Cat E visibility to RVR 4000; increase LNAV/VNAV Cat E visibility to RVR 5000; increase LNAV Cats C/D/E visibility to 1½ mile. Circling for Cat E NA north of Rwy 10-28.  
\*\*RVR 1800 authorized with use of FD or AP or HUD to DA.

MALSR  


MISSED APPROACH:  
Climb to 2600 direct ICOTE and hold.

ATIS  
**120.675**

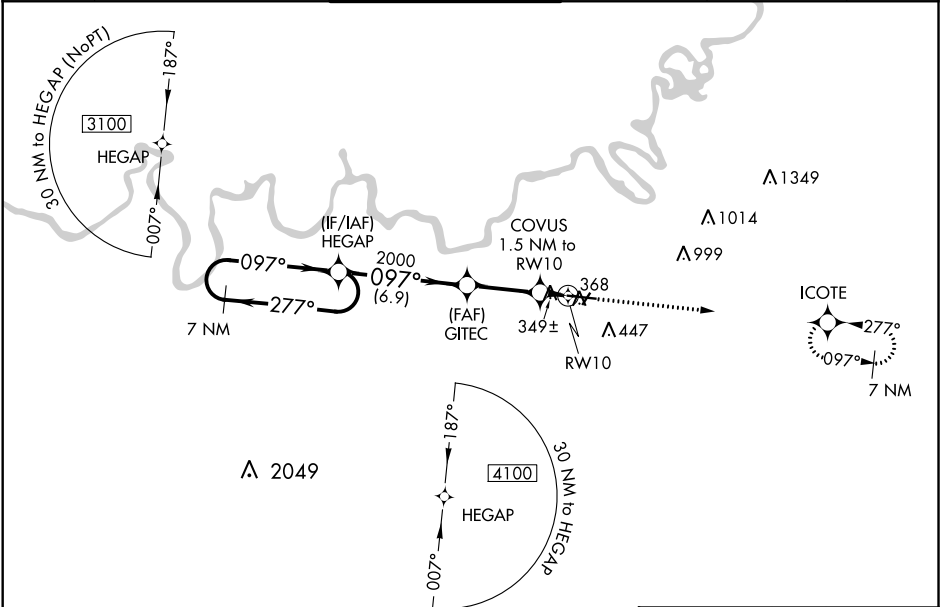
MONTGOMERY APP CON ★  
**124.0 363.025**

DANNELLY TOWER ★  
**119.7 (CTAF) 0 360.85**

GND CON  
**121.7 348.6**

CLNC DEL  
**118.3 270.3**

UNICOM  
**122.95**



ELEV 221

TDZE 219

VGSI and RNAV glidepath not coincident (VGSI Angle 3.00/TCH 64).

7 NM Holding Pattern

HEGAP

GITEC

COVUS 1.5 NM to RW10

ICOTE

2600

\*LNNAV only.

GP 3.00° TCH 50

3100

277°

097°

2000

097°

2000

\*740

1 NM to RW10

RW10

097° to RW10

TWR 368

REIL Rwy 3-21

MIRL Rwy 3-21

HIRL Rwy 10-28

CATEGORY	A	B	C	D	E
LPV DA **	419/24 200 (200-½)				
LNAV/VNAV DA	530/24 311 (400-½)				
LNAV MDA	600/24	381 (400-½)	600/35	381 (400-¾)	
CIRCLING	700-1	479 (500-1)	800-1½ 579 (600-1½)	860-2 639 (700-2)	860-2¼ 639 (700-2¼)