

MCN VORTAC	APP CRS	Rwy Idg	6426
<u>114.2</u>	212°	TDZE	354
Chan 89		Apt Elev	354

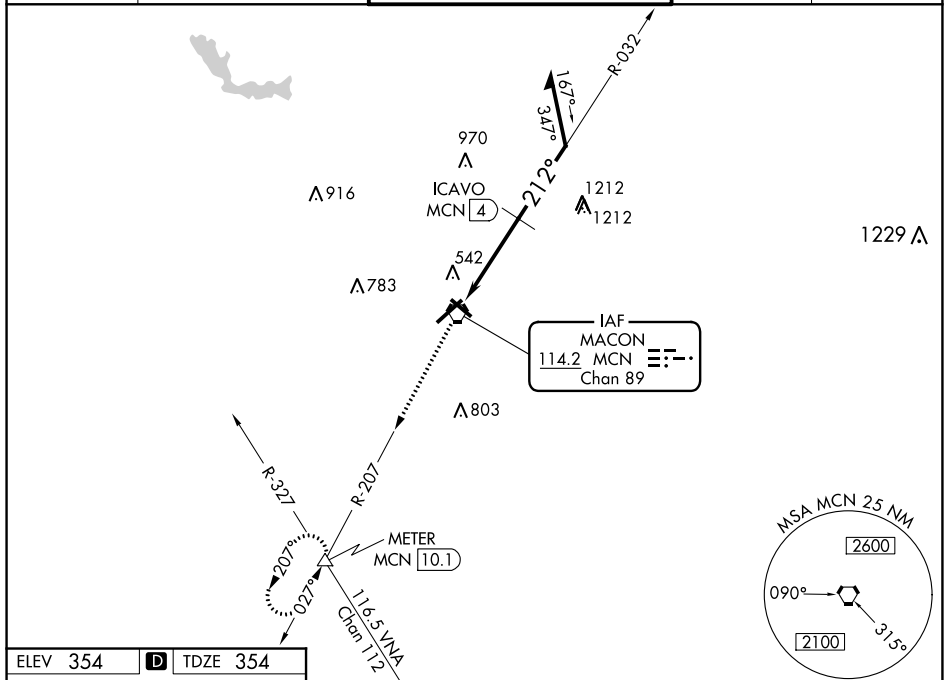
VOR RWY 23

MIDDLE GEORGIA RGNL (MCN)

T Rwy 23 Helicopter visibility reduction below $\frac{3}{4}$ SM NA.

MISSED APPROACH: Climb to 2100 on MCN VORTAC R-207 to METER INT/10.1 DME and hold.

ATIS 120.775	ATLANTA 124.2	APP CON ★ 279.6	MACON TOWER ★ 128.2 (CTAF) 0 257.8	GND CON 121.65	UNICOM 122.95
------------------------	-------------------------	---------------------------	---	--------------------------	-------------------------



ELEV 354	D	TDZE 354
----------	----------	----------

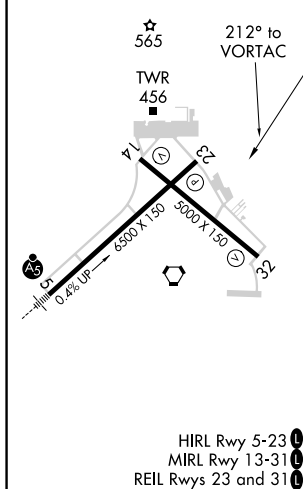


Diagram illustrating the ICAO Fix Minimums for the MCN VORTAC. The diagram shows the VORTAC station at the top left, with a bearing of 032° to the ICAO Fix. The ICAO Fix is located 2.2 NM from the VORTAC. The diagram also shows the MCN VORTAC at 2100 M, the MCN VORTAC at 212° bearing, and the MCN VORTAC at 2100 M. The diagram includes a table of minimums for the ICAO Fix.

CATEGORY	A	B	C	D
S-23	1580-1¼ 1226 (1300-1¼)	1580-1½ 1226 (1300-1½)	1580-3	1226 (1300-3)
C CIRCLING	1580-1¼ 1226 (1300-1¼)	1580-1½ 1226 (1300-1½)	1580-3	1226 (1300-3)

ICAFO FIX MINIMUMS

S-23	860-1	506 (600-1)	860-1⅜	506 (600-1⅜)
C CIRCLING	900-1	546 (600-1)	920-1½ 566 (600-1½)	1120-2½ 766 (800-2½)