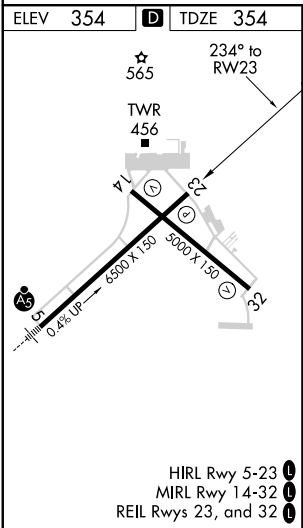
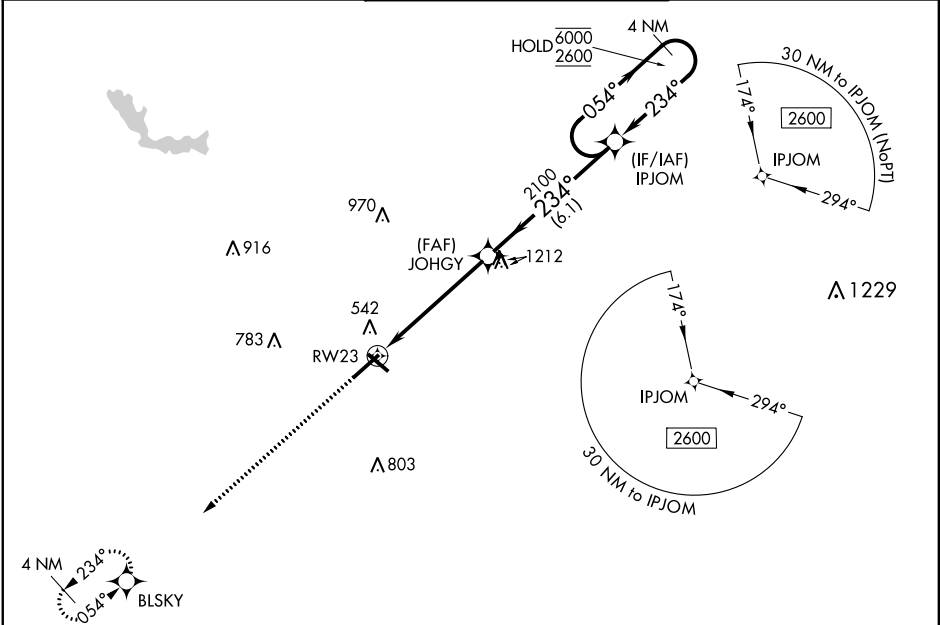


WAAS CH 40419 W23A	APP CRS 234°	Rwy Idg TDZE Apt Elev	6426 354 354
--	------------------------	-----------------------------	---

RNAV (GPS) RWY 23
MIDDLE GEORGIA RGNL (MCN)

RNP APCH.			MISSED APPROACH: Climb to 2600 direct BLSKY and hold.	
Rwy 23 helicopter visibility reduction below ¾ SM NA. For uncompensated Baro-VNAV systems, LNAV/VNAV NA below -8°C or above 54°C.				
ATIS 120.775	ATLANTA APP CON ★ 124.2 279.6	MACON TOWER ★ 128.2 (CTAF) 257.8	GND CON 121.65	UNICOM 122.95



2600 ↑ BLSKY		VGSI and RNAV glidepath not coincident (VGSI Angle 3.00/TCH 67°).		4 NM Holding Pattern	
*LNAV only.		JOHGY 2100		IPJOM	
RW23 ↓ *1.1 NM to RW23		2100		054° → 6000 ← 234° 2600	
GP 3.00° TCH 52					
1.1 NM		4.2 NM		6.1 NM	
CATEGORY	A	B	C	D	
LPV DA	635-1		281 (300-1)		
LNAV/VNAV DA	726-1¼		372 (400-1¼)		
LNAV MDA	760-1	406 (500-1)	760-1½	406 (500-1½)	
CIRCLING	900-1	546 (600-1)	920-1½ 566 (600-1½)	1120-2½ 766 (800-2½)	