

WAAS CH <b>90322</b> <b>W14A</b>	APP CRS <b>136°</b>	Rwy Idg <b>5000</b> TDZE <b>354</b> Apt Elev <b>354</b>
--	------------------------	---

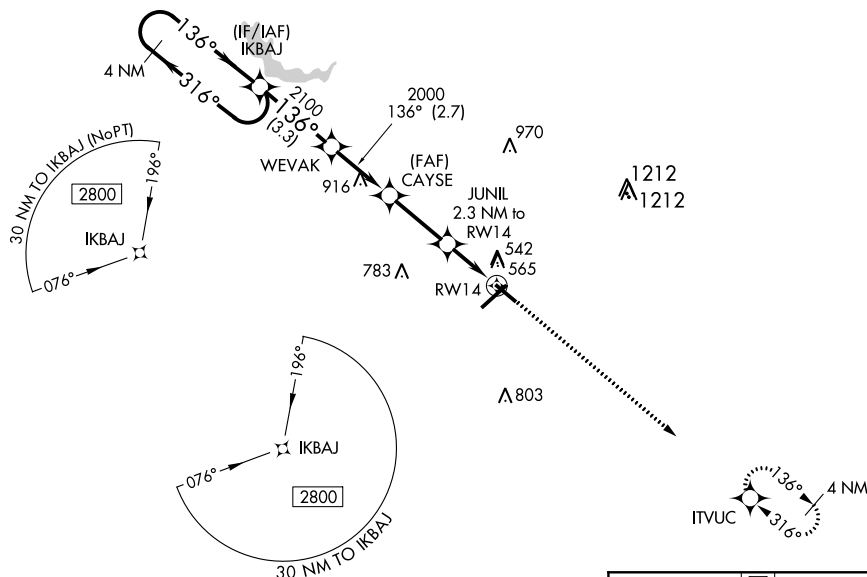
# RNAV (GPS) RWY 14

## MIDDLE GEORGIA RGNL (MCN)

**T** For uncompensated Baro-VNAV systems, LNAV/VNAV NA below -8°C (18°F)  
**A** or above 54°C (130°F). DME/DME RNP-0.3 NA. Rwy 14 helicopter visibility  
reduction below  $\frac{3}{4}$  SM NA.

**MISSED APPROACH:** Climb to 2600 direct **ITVUC** and hold.

ATIS <b>120.775</b>	ATLANTA APP CON ★ <b>124.2 279.6</b>	MACON TOWER ★ <b>128.2 (CTAF) 0 257.8</b>	GND CON <b>121.65</b>	UNICOM <b>122.95</b>
------------------------	---	--	--------------------------	-------------------------



**4 NM Holding Pattern**

**IKBAJ**

**WEVAK**

**CAYSE**

**JUNIL**

**RW14**

**GP 3.00° TCH 55**

**\*LNAV only**

**\*1.3 NM to RW14**

**\*1140**

**2800**

**2100**

**2000**

**316°**

**136°**

**136°**

**1140**

**3.3 NM**

**2.7 NM**

**2.7 NM**

**1.0 NM**

**1.3 NM**

CATEGORY	A	B	C	D
LPV DA	652-1 298 (300-1)			
LNAV/VNAV DA	745-1¼ 391 (400-1¼)			
LNAV MDA	820-1	466 (500-1)	820-1⅜	466 (500-1⅜)
<b>C</b> CIRCLING	900-1	546 (600-1)	920-1½ 566 (600-1½)	1120-2½ 766 (800-2½)

