

LOC I-BQK

108.5

APP CRS

069°

Rwy Idg

8001

TDZE

26

Apt Elev

26

ILS or LOC RWY 7

BRUNSWICK GOLDEN ISLES (BQK)

DME required.

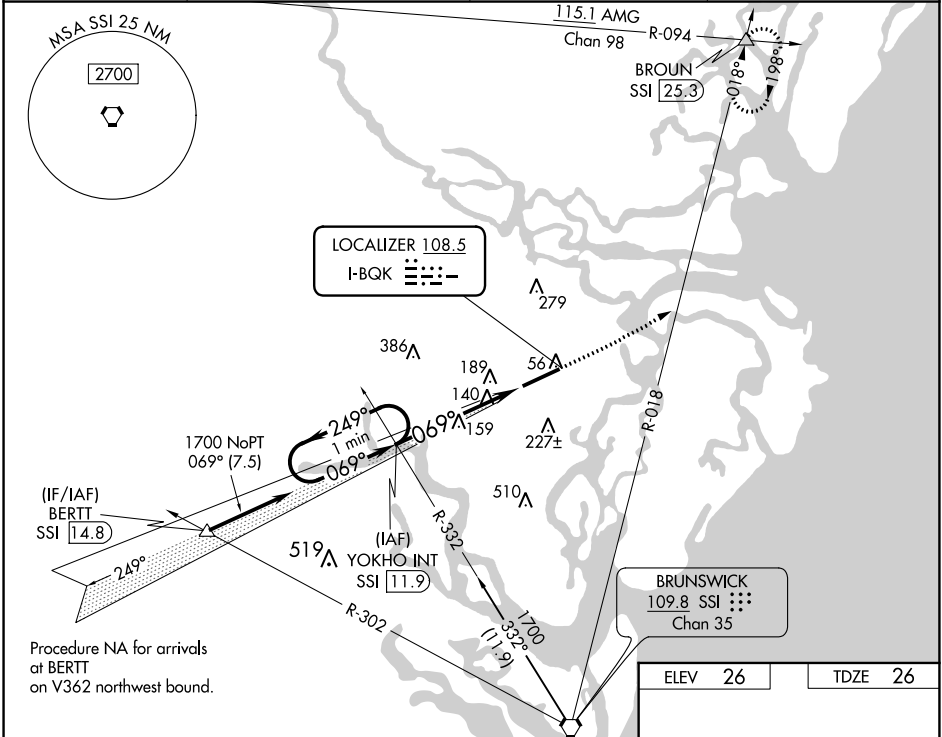
When local altimeter setting not received, use St Simons Island altimeter setting: increase DA to 245 feet; increase all MDAs 20 feet and visibility S-LOC 7 Cat C ½ SM. For inop ALS, increase S-LOC 7 Cat D visibility to 1½ SM. For inop ALS when using St Simons Island altimeter setting, increase S-LOC 7 Cat C/D visibility to 1½ SM.

MALSR

MISSED APPROACH:

Climb to 3000 on heading 069° and on SSI VORTAC R-018 to BROUN/SSI 25.3 DME and hold.

AWOS-3 124.175	JACKSONVILLE CENTER 126.75 277.4	CLNC DEL 126.75 277.4	UNICOM 123.0 (CTAF) 0
-------------------	-------------------------------------	--------------------------	--------------------------



One Minute Holding Pattern

YOKHO INT

1700

3000

hdg 069°

SSI R-018

BROUN

1700

249°

069°

069°

GS 3.00°

TCH 58

5 NM

REIL Rwy 25

HIRL Rwy 7-25

FAF to MAP 5 NM

Knots	60	90	120	150	180
Min:Sec	5:00	3:20	2:30	2:00	1:40

CATEGORY	A	B	C	D
S-ILS 7		226-½	200 (200-½)	
S-LOC 7	420-½	394 (400-½)	420-¾ 394 (400-¾)	420-¾ 394 (400-¾)
CIRCLING	540-1	514 (600-1)	540-1½ 514 (600-1½)	580-2 554 (600-2)

SE-4, 03 DEC 2020 to 31 DEC 2020

SE-4, 03 DEC 2020 to 31 DEC 2020