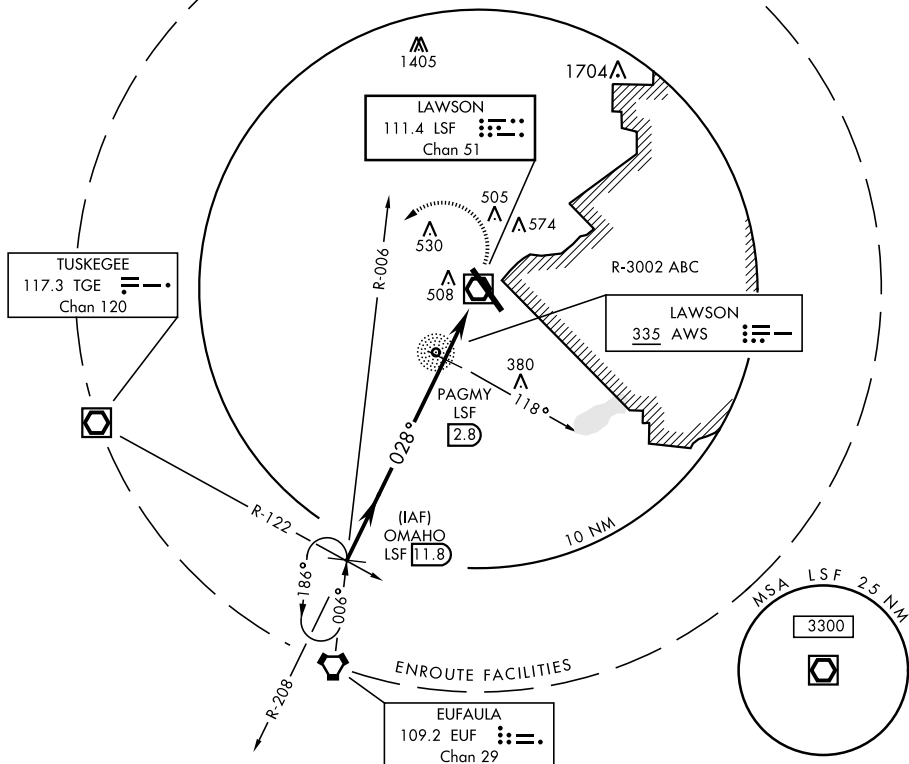


FT. BENNING (COLUMBUS), GEORGIA

VOR-A

VOR/DME LSF 111.4 Chan 51	APCH CRS 028°	Rwy Idg TDZE Arpt Elev N/A N/A 227	AL-146 [USA]	LAWSON AAF (KLSF)	
<div>▼ * Circling not authorized E of Rwy 15-33. NA when tower closed.</div>			MISSED APPROACH: Climbing left turn to 2400 via heading 240° and EUF VORTAC R-006 to OMAHO INT/EUF 12.4 and hold.		
ATIS ★ 134.375	ATLANTA APP CON 125.5 323.1 blw 7000 126.55 353.75 7000 and abv	LAWSON TOWER ★ 119.05 269.525	GND CON 121.7 254.25	CLNC DEL 121.7 251.15	ASR/ PAR

ADF or DME REQUIRED

OMAHO LSF **11.8**
TGE R-122

2400

028°

PAGMY
AWS BRG 118°

1600

VOR/DME

CATEGORY	A	B	C	D
CIRCLING *	820-1	593 (600-1)	840-1 ¾ 613 (700-1 ¾)	880-2 653 (700-2)

2400

hdg

240°

2400

EUF

R-006

OMAHO

EUF

12.4

ELEV 227

380

TWR

319

330

370

028° to LSF

VOR/DME

HIRL Rwy 15-33
Rwy 33 Idg 9300'

FT. BENNING (COLUMBUS), GEORGIA

32°20'N-85°00'W

LAWSON AAF (KLSF)

Amdt 8A 16JUL20

VOR-A

SE-4, 03 DEC 2020 to 31 DEC 2020