
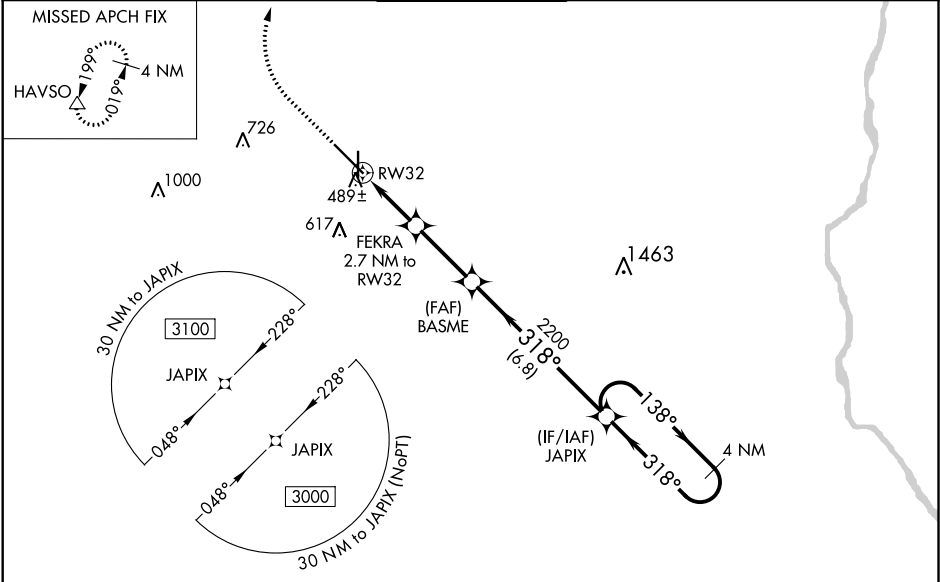


WAAS CH <b>93704</b> <b>W32A</b>	APP CRS <b>318°</b>	Rwy Idg TDZE <b>382</b> Apt Elev <b>401</b>
--	------------------------	---

RNAV (GPS) RWY 32  
DOTHAN RGNL (DHN)

<p>For uncompensated Baro-VNAV systems, LNAV/VNAV NA below -15°C (5°F) or above 41°C (105°F). DME/DME RNP-0.3 NA. **RVR 1800 authorized with use of FD or AP or HUD to DA.</p>	<p>MALSRL</p> 	<p>MISSED APPROACH: Climb to 900 then climbing right turn to 3000 direct HAVSO and hold.</p>
--	---	--

ATIS <b>135.725</b>	CAIRNS APP CON * <b>125.4 327.125</b>	<b>DOTHAN TOWER*</b> <b>118.4 (CTAF) 0 257.6</b>	GND CON <b>121.7 348.6</b>	UNICOM <b>122.95</b>
------------------------	--	---	-------------------------------	-------------------------



ELEV 401	<b>D</b>	TDZE 382
----------	----------	----------

