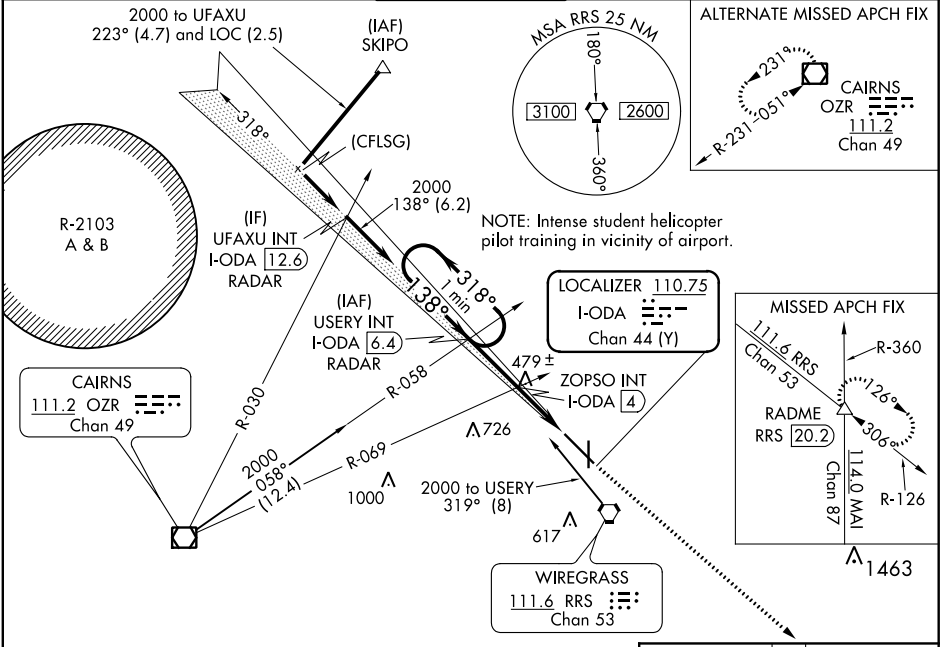


LOC/DME I-ODA 110.75 Chan 44 (Y)	APP CRS 138°	Rwy Idg TDZE 401 Apt Elev 401
--	------------------------	---

ILS or LOC RWY 14
DOTHAN RGNL (DHN)

MISSED APPROACH: Climb to 3000 on heading 138° and on RRS VORTAC R-126 to RADME INT/ RRS 20.2 DME and hold.

ATIS 135.725	CAIRNS APP CON ★ 125.4 327.125	DOTHAN TOWER ★ 118.4 (CTAF) 0 257.6	GND CON 121.7 348.6	UNICOM 122.95
------------------------	--	---	-------------------------------	-------------------------



VGSI and ILS glidepath not coincident (VGSI Angle 3.00/TCH 40).

One Minute Holding Pattern

USERY INT I-ODA 6.4 RADAR

ZOPSO INT I-ODA 4

I-ODA* 2.5

I-ODA 1.6

GS 3.00° TCH 54

Use I-ODA DME when on localizer course.

2.5 NM 1.5 NM 0.9 NM

CATEGORY	A	B	C	D
S-ILS 14	601-3/4 200 (200-3/4)			
S-LOC 14	1100-1 699 (700-1)		1100-2 699 (700-2)	
CIRCLING	1100-1 699 (700-1)		1100-2 699 (700-2)	
ZOPSO FIX MINIMUMS				
S-LOC 14	740-1 339 (400-1)			
CIRCLING	860-1 459 (500-1)		920-1 519 (600-1/2)	

3000

hdg 138°

R-126

RADME

ELEV 401

TDZE 401

*LOC only.

138° 4.9 NM from FAF

REIL Rwy 18

REIL Rwy 14

HIRL Rwy 18-36

HIRL Rwy 14-32

FAF to MAP 4.9 NM

Knots	60	90	120	150	180
Min:Sec	4:54	3:16	2:27	1:58	1:38

SE-4, 03 DEC 2020 to 31 DEC 2020

SE-4, 03 DEC 2020 to 31 DEC 2020