

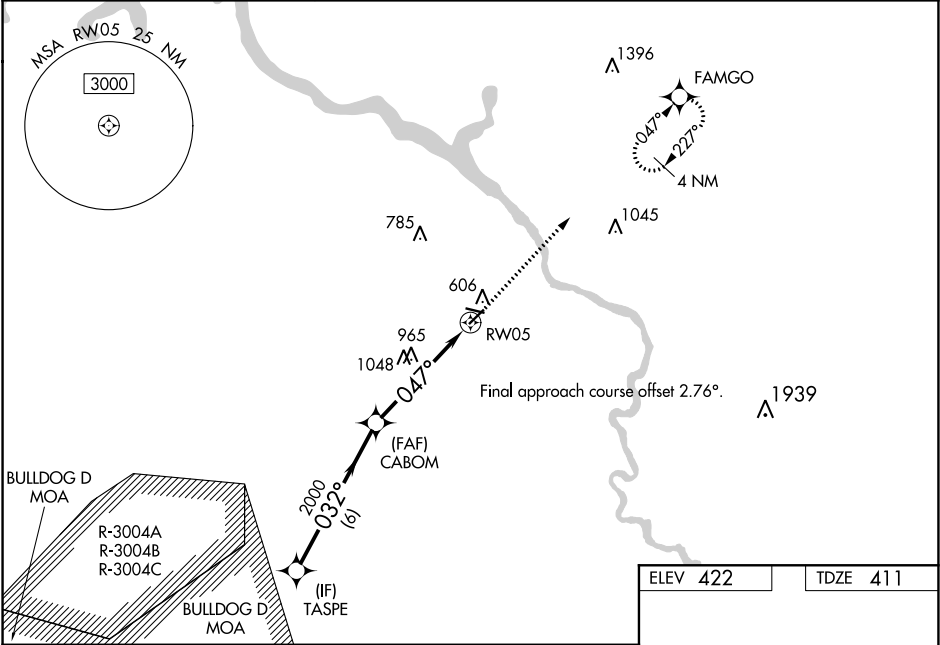
WAAS CH 65842 W05A	APP CRS 047°	Rwy Idg TDZE Apt Elev	3800 411 422
--	------------------------	-----------------------------	---

RNAV (GPS) RWY 5

DANIEL FIELD (DNL)

RNP APCH.	<p>Baro-VNAV and VDP NA when using Augusta Rgnl at Bush Field altimeter setting. Rwy 5 helicopter visibility reduction below 3/4 SM NA. For uncompensated Baro-VNAV systems, LNAV/VNAV NA below -15°C or above 54°C. When local altimeter not received use Augusta Rgnl at Bush Field altimeter setting: Increase LPV DA to 716 feet, LNAV/VNAV DA to 1496 feet and all MDA 60 feet; Increase LPV all Cats visibility 1/8 SM, LNAV Cat A and Circling Cat C visibility 1/4 SM.</p>	MISSED APPROACH: Climb to 3400 direct FAMGO and hold, continue climb-in-hold to 3400.
-----------	--	---

ASOS 135.275	AUGUSTA APP CON ★ 126.8 270.3	UNICOM 123.05 (CTAF) 0
------------------------	---	----------------------------------



VGSi and RNAV glidepath not coincident (VGSi Angle 3.00°/TCH 30).					3400 ↑ FAMGO		
					*LNAV only.		
GP 3.00° TCH 50							
CATEGORY	A	B	C	D			
LPV DA	661-¾ 250 (300-¾)						
LNAV/ VNAV DA	1441-4 1030 (1100-4)						
LNAV MDA	1280-1 869 (900-1)	1280-1¼ 869 (900-1¼)	1280-2½ 869 (900-2½)				
CIRCLING	1280-1¼	858 (900-1¼)	1360-2¾ 938 (1000-2¾)	1360-3 938 (1000-3)			

REIL Rwy 11 0
MIRL Rwy 5-23 and 11-29 0

SE-4, 03 DEC 2020 to 31 DEC 2020

SE-4, 03 DEC 2020 to 31 DEC 2020