

WAAS CH 90328 W08A	APP CRS 082°	Rwy Idg TDZE Apt Elev	6002 137 146
--	------------------------	-----------------------------	---

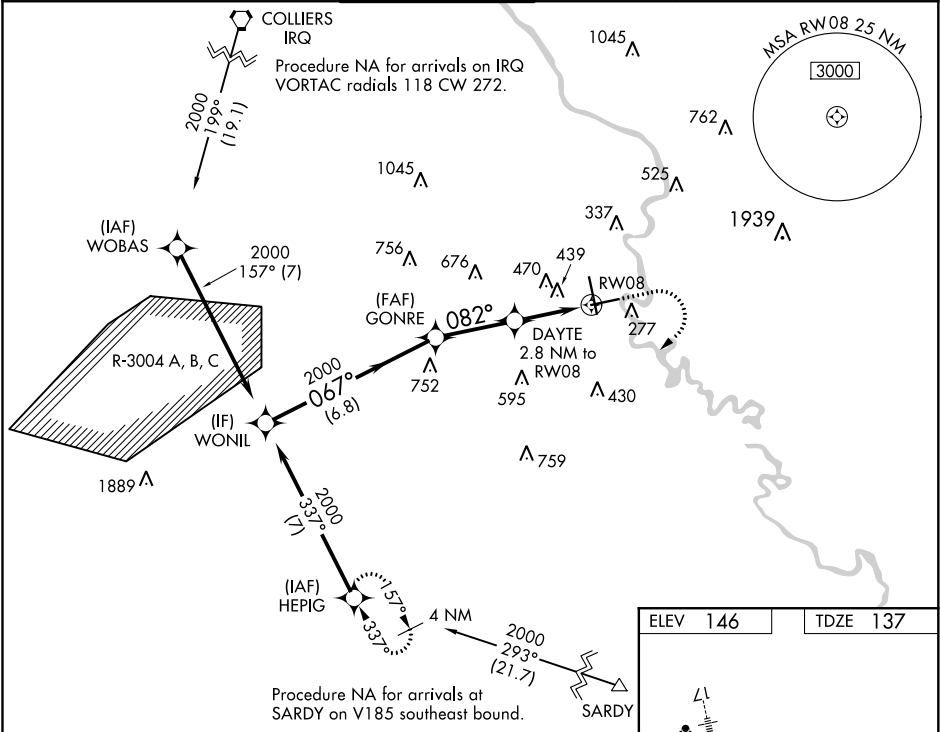
RNAV (GPS) Z RWY 8
AUGUSTA RGNL AT BUSH FIELD (AGS)

RNP APCH.

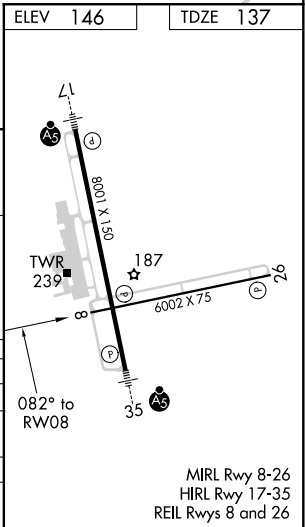
Baro-VNAV and VDP NA when using Daniel Field altimeter setting. For uncompensated Baro-VNAV systems, LNAV/VNAV NA below -15°C or above 54°C. Rwy 8 helicopter visibility reduction below ¾ SM NA. When local altimeter setting not received, use Daniel Field altimeter setting and increase LPV DA to 724 feet and LNAV/VNAV DA to 829 feet and all MDA 60 feet; increase LNAV Cats C/D visibility ¼ SM and Circling Cats C/D visibility ¼ SM.

MISSED APPROACH:
Climb to 1200 then
climbing right turn to
2000 direct HEPIG
and hold.

ATIS 132.75	AUGUSTA APP CON ★ 126.8 270.3	AUGUSTA TOWER ★ 118.7 (CTAF) 0 239.3	GND CON 121.9 348.6	CLNC DEL 118.65	UNICOM 122.95
-----------------------	---	--	-------------------------------	---------------------------	-------------------------



VGSI and RNAV glidepath not coincident (VGSI Angle 3.00/TCH 64).				1200	2000	HEPIG
WONIL				↑		
GONRE				↘		
DAYTE				✧		
2000				*1.6 NM to RW08		
GP 3.00°				*1080		
TCH 55				*RNAV only.		
6.8 NM				2.9 NM		
A				C		
LPV DA				669-1¾ 532 (600-1¾)		
LNAV/VNAV DA				774-2¼ 637 (700-2¼)		
LNAV MDA				700-1 563 (600-1) 700-1½ 563 (600-1½)		
CIRCLING				780-1 634 (700-1) 780-1¾ 634 (700-1¾) 900-2½ 754 (800-2½)		



SE-4, 03 DEC 2020 to 31 DEC 2020

SE-4, 03 DEC 2020 to 31 DEC 2020