

AUGUSTA DEP CON ★
126.8 270.3
CLNC DEL
118.65
AUGUSTA TOWER ★
118.7 (CTAF) 239.3

TOP ALTITUDE:
ASSIGNED BY ATC

TAKEOFF MINIMUMS

- Rwy 8: Standard with minimum climb of 394' per NM to 2500.
Rwy 17: Standard with minimum climb of 265' per NM to 2400.
Rwy 26: 300-1¾ or standard with minimum climb of 312' per NM to 2000.
Rwy 35: Standard with minimum climb of 302' per NM to 2500.

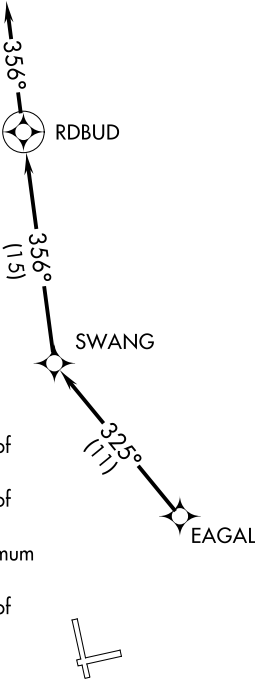
- NOTE: DME/DME/IRU or GPS required.
NOTE: RADAR required.
NOTE: RNAV 1.
NOTE: For Prop aircraft only during Masters Golf Tournament week.
NOTE: Do not exceed 250K until advised by ATC.

NOTE: Chart not to scale.



DEPARTURE ROUTE DESCRIPTION

TAKEOFF RUNWAYS 8, 17, 26, 35: Climb heading assigned by ATC for vectors to EAGAL. Then on depicted route to RDBUD, then on heading 356° for RADAR vectors, thence....
.... maintain altitude assigned by ATC. Expect clearance to filed altitude/flight level within 10 minutes after departure.



SE-4, 03 DEC 2020 to 31 DEC 2020

SE-4, 03 DEC 2020 to 31 DEC 2020