

WAAS CH 40399 W10A	APP CRS 095°	Rwy Idg TDZE 1000 Apt Elev 1026
--	------------------------	---

RNAV (GPS) Y RWY 10

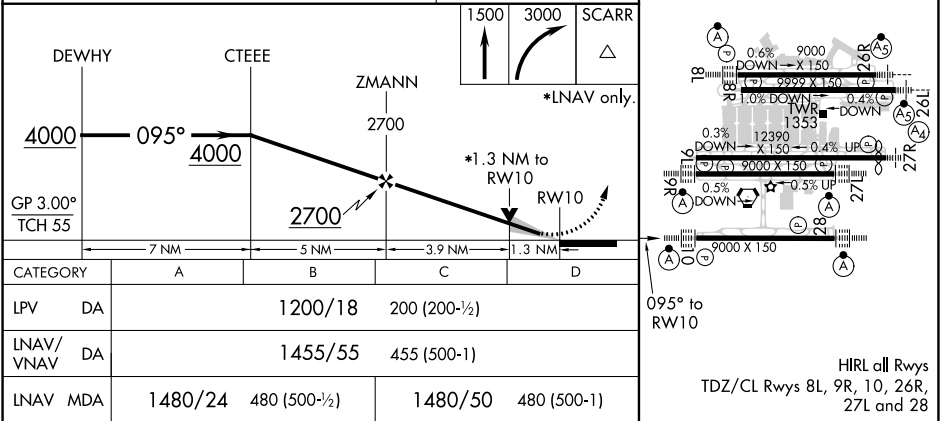
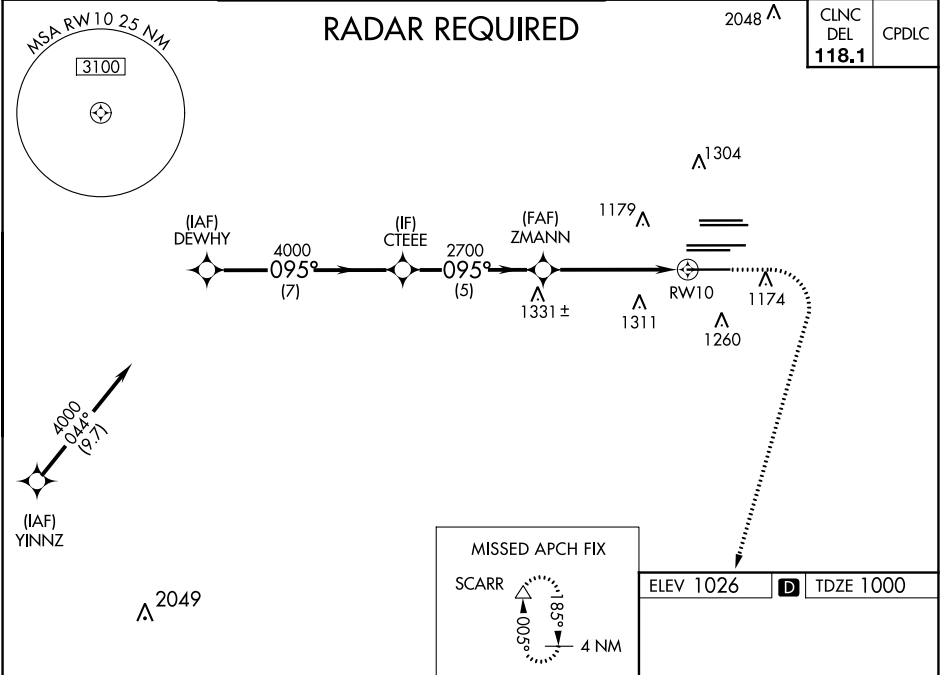
HARTSFIELD-JACKSON ATLANTA INTL (ATL)

▼ For uncompensated Baro-VNAV systems, LNAV/VNAV NA below -7°C (20°F) or above 54°C (130°F). DME/DME-0.3 RNP NA. For inop ALSF-2, increase LNAV/VNAV all Cats visibility to 1½ mile and LNAV Cats C and D visibility to 1¾ mile. LNAV procedure NA during simultaneous operations. Simultaneous approach authorized with Rwy 8L or 8R or 9L, or Rwys 8L and 9L. Use of FD or AP providing RNAV track guidance required during simultaneous operations.

ALSF-2

MISSED APPROACH: Climb to 1500 then climbing right turn to 3000 direct SCARR and hold.

D-ATIS ARR 119.65 DEP 125.55	ATLANTA APP CON 127.9 379.9	ATLANTA TOWER 8L-26R 8R-26L 9L-27R 9R-27L 10-28 RWYS 119.1 125.325 123.85 119.3 119.5 254.4	ALL RWYS 121.9	GND CON 10-28 RWYS 121.75 121.65 254.4	ALL RWYS 254.4
--	--	--	-----------------------------	---	-----------------------------



SE-4, 03 DEC 2020 to 31 DEC 2020

SE-4, 03 DEC 2020 to 31 DEC 2020