

Rwy Idg	8800
TDZE	1015
Apt Elev	1026

RNAV (RNP) Z RWY 8L
HARTSFIELD-JACKSON ATLANTA INTL (ATL)

T For uncompensated Baro-VNAV systems, procedure NA below -8°C (18°F) or above 54°C (130°F). GPS required. Simultaneous approach authorized. Arrival from BOLND NA during simultaneous triple approaches. For inop ALS, increase RNP 0.30 all Cats visibility to 1½ SM.

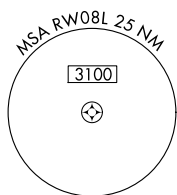
MISSED APPROACH: Climb to 1500 then climbing left turn to 3500 direct TROYS and hold.

D-ATIS
ARR 119.65
DEP 125.55

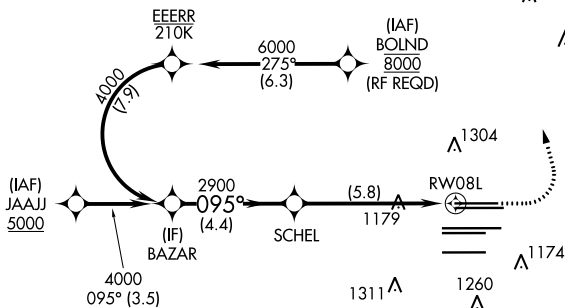
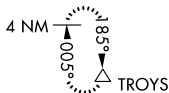
ATLANTA
APP CON
27.9 379.9

ATLANTA TOWER					ALL
8L-26R	8R-26L	9L-27R	9R-27L	10-28	RWYS
119.1	125.325	123.85	119.3	119.5	254.4

	GND CON		ALL
(8L-26R,8R-26L)	(9L-27R,9R-27L)	10-28	RWYS
121.9	121.75	121.65	254.4

CLNC
DEL
118.1

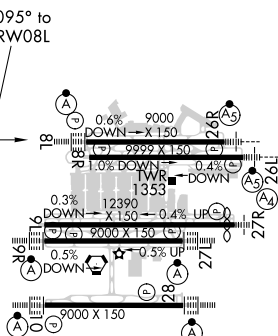
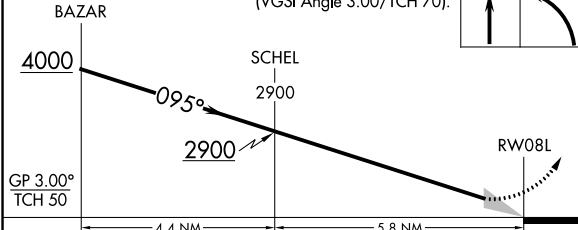
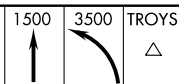
CPDLC



D

TDZE 1015

VGSI and RNAV glidepath not coincident
(VGSI Angle 3.00/TCH 70).



HIRL all Rwys
TDZ/CL Rwys 8L, 9R, 10, 26R,
27L and 28

AUTHORIZATION REQUIRED