

ATLANTA, GEORGIA

AL-26 (FAA)

RNAV (GPS) PRM Y RWY 28
(SIMULTANEOUS CLOSE PARALLEL)
HARTSFIELD-JACKSON ATLANTA INTL (ATL)

WAAS CH 61299 W28A	APP CRS 275°	Rwy Idg 9000 TDZE 998 Apt Elev 1026
--	------------------------	--

V For uncompensated Baro-VNAV systems, [NAV/VNAV NA below -7°C (20°F) or above 54°C (130°F). DME/DME RNP 0.3 NA. Simultaneous close parallel approach authorized with ILS PRM and RNAV PRM Rwy 26R or 26L or 27R or 27L, or Rwy 26R and 27R, or Rwy 26R and 27L, or Rwy 26L and 27R, or Rwy 26L and 27L. Use of FD or AP providing RNAV track guidance required during simultaneous operations. Dual VHF Comm required. See additional requirements on AAUP.

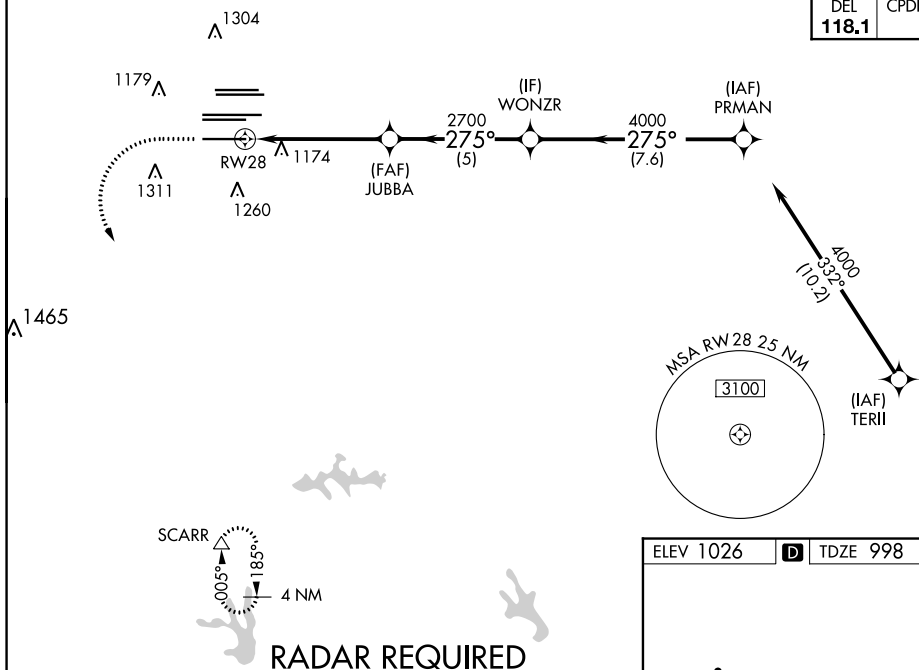
ALSF-2



MISSED APPROACH: Climb to 1500 then climbing left turn to 3000 direct SCARR and hold.

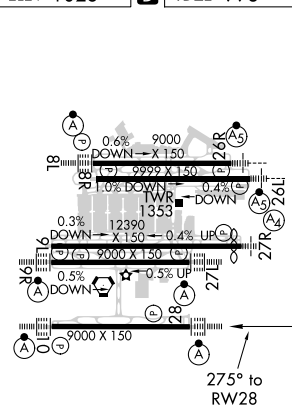
D-ATIS	ATLANTA	ATLANTA TOWER						ALL				
ARR 119.65	APP CON	8L-26R	8R-26L	9L-27R	9R-27L	10-28	RWYS	(8L-26R,8R-26L)	(9L-27R,9R-27L)	10-28	RWYS	
DEP 125.55	127.9 379.9	119.1	125.325	123.85	119.3	119.5	254.4	121.9	121.75	121.65	254.4	
		PRM 133.425										

CLNC DEL 118.1	CPDLC
-----------------------------	-------



1500 ↑	3000 ↖	SCARR △	<p>JUBBA 2700 WONZR PRMAN 275° 4000 4000 RW28 5.2 NM 5 NM 7.6 NM GP 3.00° TCH 57</p>			
CATEGORY	A	B	C	D		
LPV DA	1198/18		200 (200-½)			
INAV/ VNAV	DA	1250/24	252 (300-½)			

ELEV 1026	D	TDZE 998
-----------	----------	----------



HIRL all Rwys
TDZ/CL Rwys 8L, 9R, 10, 26R,
27L and 28

ATLANTA, GEORGIA
Orig-A 12OCT17

33°38'N-84°26'W

HARTSFIELD-JACKSON ATLANTA INTL (ATL)

RNAV (GPS) PRM Y RWY 28 (SIMULTANEOUS CLOSE PARALLEL)

SE-4, 03 DEC 2020 to 31 DEC 2020

SE-4, 03 DEC 2020 to 31 DEC 2020