

ATLANTA, GEORGIA

AL-26 (FAA)

20198

RNAV (GPS) PRM Y RWY 26R (SIMULTANEOUS CLOSE PARALLEL) HARTSFIELD-JACKSON ATLANTA INTL (ATL)

WAAS CH 61000 W26B	APP CRS 275°	Rwy Idg TDZE 990 Apt Elev 1026
--	------------------------	--

For uncompensated Baro-VNAV systems, LNAV/VNAV NA below -7°C (20°F) or above 54°C (130°F). DME/DME RNP-0.3 NA. Simultaneous close parallel approach authorized with ILS PRM and RNAV PRM RWY 27R or 27L or 28, or Rwy 27R and 28, or Rwy 27L and 28. Use of FD or AP providing RNAV track guidance required during simultaneous operations. Dual VHF comm required. See additional requirements on AAUP.

MALSR

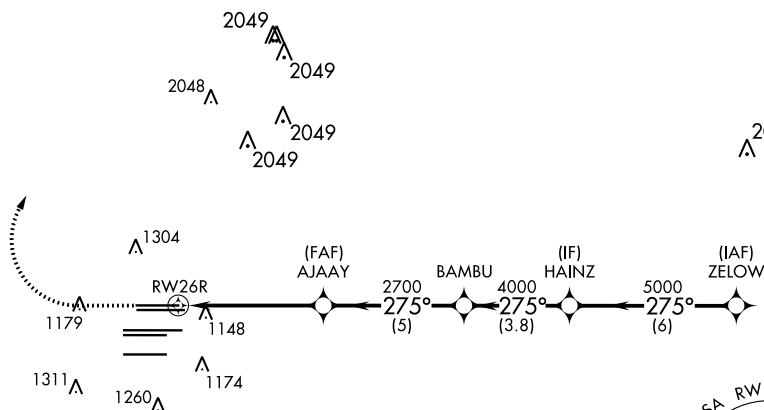


MISSED APPROACH: Climb to 1500 then climbing right turn to 3500 direct TROYS and hold.

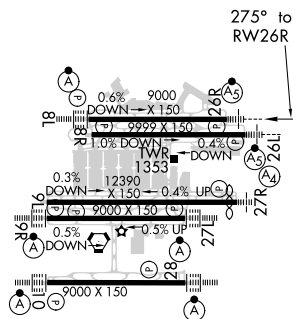
D-ATIS ARR 119.65 DEP 125.55	ATLANTA APP CON 127.9 379.9	ATLANTA TOWER 8L-26R 8R-26L 9L-27R 9R-27L 10-28 RWYS 119.1 125.325 123.85 119.3 119.5 254.4 PRM 126.9	ALL RWYS (8L-26R, 8R-26L) (9L-27R, 9R-27L) 10-28 121.9 121.75 121.65 254.4
--	--	--	--



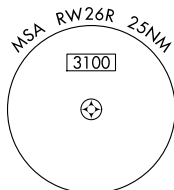
CLNC DEL 118.1	CPDLC
-----------------------------	-------



ELEV 1026	D	TDZE 990
-----------	---	----------



RADAR REQUIRED



1500	3500	TROYS	VGSI and RNAV glidepath not coincident (VGSI Angle 3.00/TCH 69).	HAINZ	ZELOW
AJAAY	BAMBU	HAINZ	ZELOW		
2700	4000	5000	275°	5000	
RW26R					
5.2 NM	5 NM	3.8 NM	6 NM		
CATEGORY	A	B	C	D	
LPV	DA	1190/18	200 (200-1/2)		
LNAV/VNAV	DA	1426/50	436 (500-1)		

ATLANTA, GEORGIA
Orig-A 12OCT17

33°38'N-84°26'W

HARTSFIELD-JACKSON ATLANTA INTL (ATL)

RNAV (GPS) PRM Y RWY 26R (SIMULTANEOUS CLOSE PARALLEL)

SE-4, 03 DEC 2020 to 31 DEC 2020