

ATLANTA, GEORGIA

AL-26 (FAA)

RNAV (GPS) PRM RWY 9R  
(SIMULTANEOUS CLOSE PARALLEL)  
HARTSFIELD-JACKSON ATLANTA INTL (ATL)

WAAS CH <b>97400</b> <b>W09B</b>	APP CRS <b>095°</b>	Rwy Idg <b>9000</b> TDZE <b>1026</b> Apt Elev <b>1026</b>
--	------------------------	---

**⚠** For uncompensated Baro-VNAV systems, LNAV/VNAV NA below -7°C (20°F) or above 54°C (130°F). DME/DME RNP-0.3 NA. Simultaneous close parallel approach authorized with ILS PRM and RNAV PRM Rwy 8L or 8R or 10, or Rwy 8L and 10, or Rwy 8R and 10. Dual VHF comm required. See additional requirements on AAPP. Use of FD or AP providing RNAV track guidance required during simultaneous operations.

ALSF-2

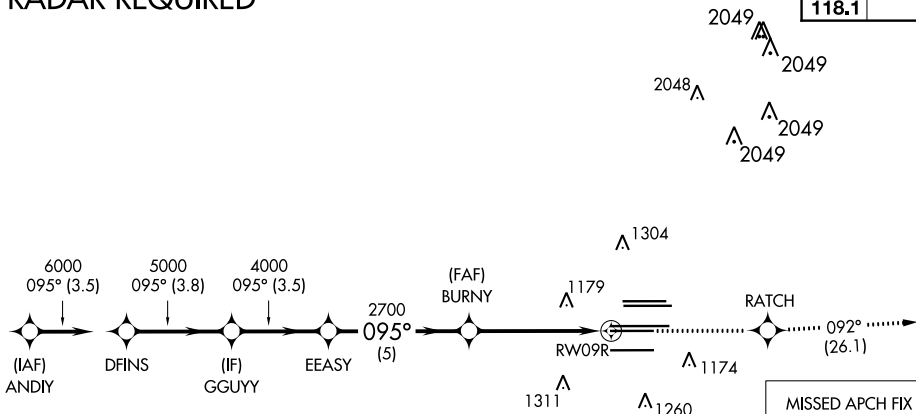


**MISSED APPROACH:**  
Climb to 4000 direct  
RATCH and on track  
092° to CONNI  
and hold.

D-ATIS	ATLANTA APP CON	ATLANTA TOWER						ALL	GND CON				ALL
ARR <b>119.65</b>		8L-26R	8R-26L	9L-27R	9R-27L	10-28	RWYS		(8L-26R,8R-26L)	(9L-27R,9R-27L)	10-28	RWYS	
DEP <b>125.55</b>	<b>127.9 379.9</b>	<b>119.1</b>	<b>125.325</b>	<b>123.85</b>	<b>119.3</b>	<b>119.5</b>	<b>254.4</b>		<b>121.9</b>	<b>121.75</b>	<b>121.65</b>	<b>254.4</b>	
				<b>PRM</b>	<b>132.55</b>								

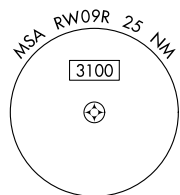
## RADAR REQUIRED

CLNC DEL <b>118.1</b>	CPDLC
-----------------------------	-------

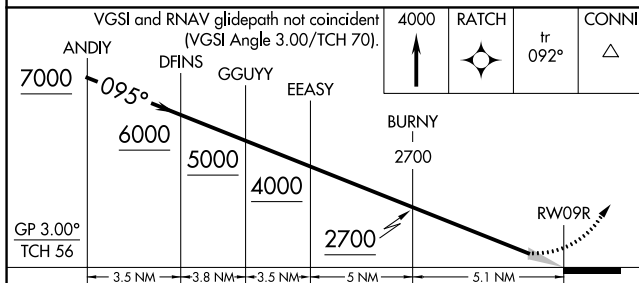


MISSED APCH FIX

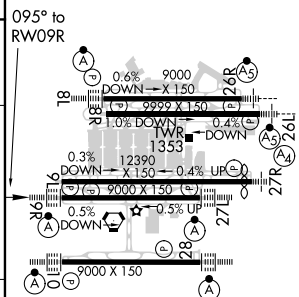
CONNI



ELEV	1026		TDZE	1026
------	------	---	------	------



CATEGORY		A	B	C	D
LPV	DA	1226/18		200 (200-½)	
LNAP/ VNAV	DA	1403/40		377 (400-¾)	



HIRL all Rwys  
TDZ/CL Rwys 8L, 9R, 10, 26R,  
27L and 28

ATLANTA, GEORGIA  
Orig-A 12OCT17

33°38'N-84°26'W

HARTSFIELD-JACKSON ATLANTA INTL (ATL)

RNAV (GPS) PRM RWY 9R (SIMULTANEOUS CLOSE PARALLEL)

SE-4, 03 DEC 2020 to 31 DEC 2020

SE-4, 03 DEC 2020 to 31 DEC 2020