

ATLANTA, GEORGIA

AL-26 (FAA)

A) RNAV (GPS) PRM RWY 9L
(SIMULTANEOUS CLOSE PARALLEL)
HARTSFIELD-JACKSON ATLANTA INTL (ATL)

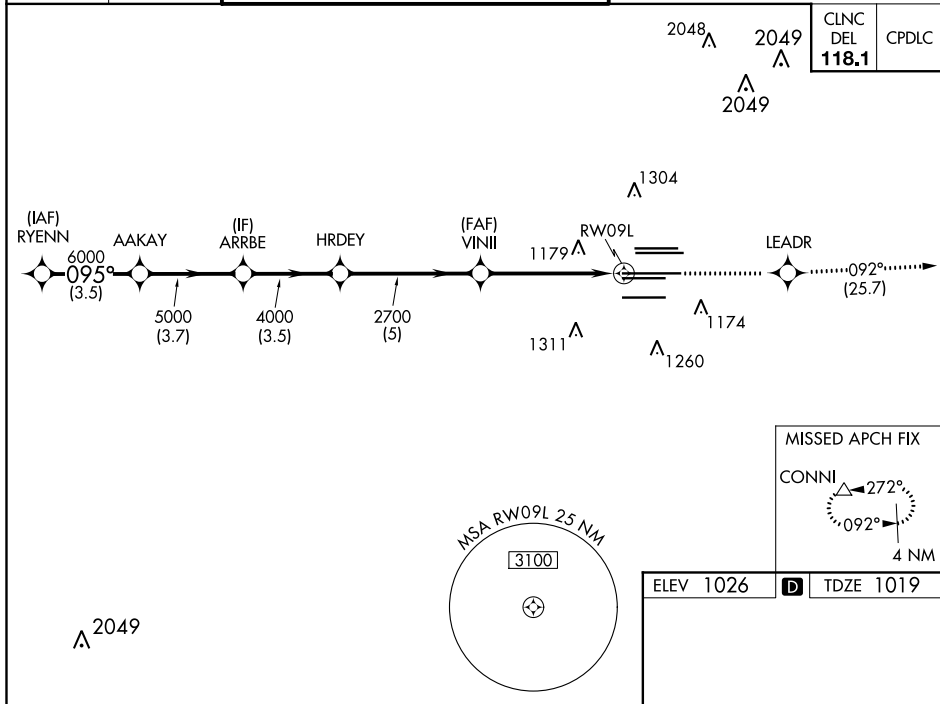
WAAS CH 62800 W09D	APP CRS 095°	Rwy Idg 11730 TDZE 1019 Apt Elev 1026
--	------------------------	--

RNP APCH.

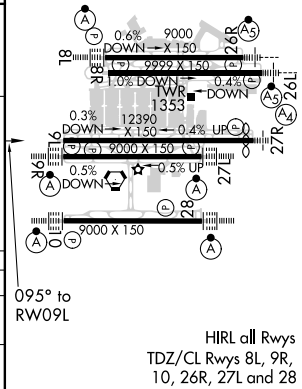
T For uncompensated Baro-VNAV systems, LNAV/VNAV NA below -7°C or above 54°C. Simultaneous approach authorized. Use of FD or AP required during simultaneous operations. Dual VHF Comm required. See additional requirements on AAUP.

MISSED APPROACH: Climb to 4000 direct LEADR and on track 092° to CONNI and hold.

D-ATIS	ATLANTA	ATLANTA TOWER					ALL					
ARR 119.65	APP CON	8L-26R	8R-26L	9L-27R	9R-27L	10-28	RWYS	(8L-26R,8R-26L)	(9L-27R,9R-27L)	10-28	ALL	
DEP 125.55	127.9 379.9	119.1	125.325	123.85	119.3	119.5	254.4	121.9	121.75	121.65	254.4	
		PRM 132.55										



VGS1 and RNAV glidepath not coincident (VGS1 Angle 3.00/TCH 71).					4000 	LEADR 	tr 092°	CONNI
CATEGORY		A		B		C		D
LPV DA				1359/50		340 (400-1)		
LNAV/ VNAV DA				1405/60		386 (400-1¼)		



ATLANTA, GEORGIA
Orig-E 26MAR20

33°38'N-84°26'W

HARTSFIELD-JACKSON ATLANTA INTL (ATL)

RNAV (GPS) PRM RWY 9L (SIMULTANEOUS CLOSE PARALLEL)

SE-4, 03 DEC 2020 to 31 DEC 2020