

RNAV (GPS) PRM RWY 8R (SIMULTANEOUS CLOSE PARALLEL)

HARTSFIELD-JACKSON ATLANTA INTL (ATL)

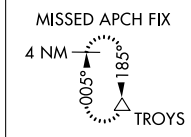
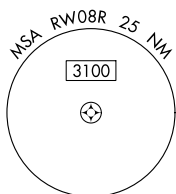
WAAS CH 48800 W08D	APP CRS 095°	Rwy Idg TDZE 1024 Apt Elev 1026
--	------------------------	---

RNP APCH.

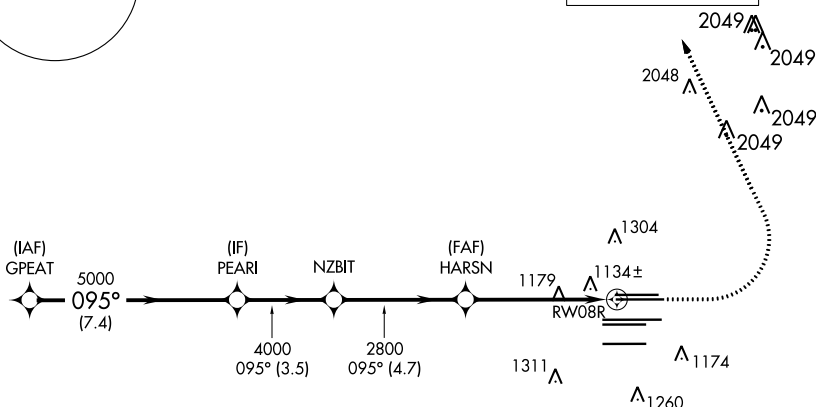
▼ For uncompensated Baro-VNAV systems, LNAV/VNAV NA below -7°C, or above 54°C.
 ▲ NA Simultaneous close parallel approach authorized with ILS PRM and RNAV PRM Rwy 9L or 9R or 10, or Rwy 9L and 10, or Rwy 9R and 10. See additional requirements on AAUP.
 Dual VHF comm required. Use of FD or AP providing RNAV track guidance required during simultaneous operations.

MISSED APPROACH: Climb to 1500 then climbing left turn to 3500 direct TROYS and hold.

D-ATIS	ATLANTA APP CON	ATLANTA TOWER	ALL RWYS	GND CON	ALL RWYS
ARR 119.65		8L-26R 8R-26L 9L-27R 9R-27L 10-28		(8L-26R, 8R-26L) (9L-27R, 9R-27L) 10-28	
DEP 125.55	127.9 379.9	119.1 125.325 123.85 119.3 119.5 254.4	PRM 126.9	121.9 121.75 121.65 254.4	

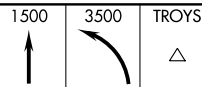


CINC DEL	CPDLC
118.1	



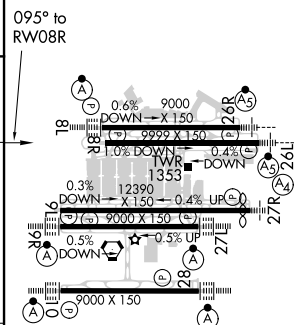
RADAR REQUIRED

VGSI and RNAV glidepath not coincident (VGSI Angle 3.00/TCH 67').



	GPEAT	PEARI	NZBIT	HARSN	RW08R
5000	095°	5000	4000	2800	
GP 3.00° TCH 53					
	7.4 NM	3.5 NM	4.7 NM	5.4 NM	
CATEGORY	A	B	C	D	
LPV DA		1282/40	258 (300-¾)		
LNAV/VNAV DA		1516-1⅓	492 (500-1⅓)		

ELEV 1026	TDZE 1024
-----------	-----------



HIRL all Rwy's
 TDZ/CL Rwy's 8L, 9R,
 10, 26R, 27L and 28

RNAV (GPS) PRM RWY 8R (SIMULTANEOUS CLOSE PARALLEL)