

ATLANTA, GEORGIA

AL-26 (FAA)

20198

RNAV (GPS) PRM RWY 26L (SIMULTANEOUS CLOSE PARALLEL) HARTSFIELD-JACKSON ATLANTA INTL (ATL)

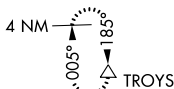
WAAS CH 56300 W26A	APP CRS 275°	Rwy Idg 9999 TDZE 996 Apt Elev 1026
--	------------------------	--

▼ For uncompensated Baro-VNAV systems, LNAV/VNAV NA below -7°C (20°F) or above 54°C (130°F). DME/DME RNP-0.3 NA. For inop MALSR, increase LPV all Cats visibility to RVR 4500 and LNAV/VNAV all Cats visibility to RVR 6000. Simultaneous close parallel approach authorized with ILS PRM and RNAV PRM Rwy 27R or 27L or 28, or Rwy 27R and 28, or Rwy 27L and 28. Dual VHF Comm required. Use of FD or AP providing RNAV track guidance required during simultaneous operations. See additional requirements on AAUP.

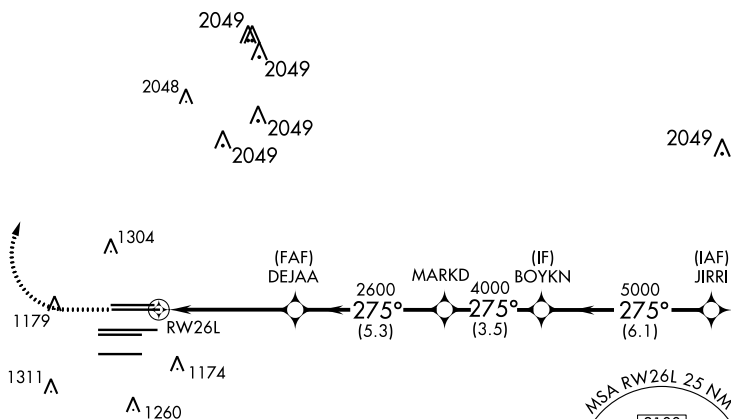


MISSED APPROACH:
Climb to 1500 then
climbing right turn to
3500 direct TROYS
and hold.

D-ATIS	ATLANTA APP CON	ATLANTA TOWER	ALL RWYS	GND CON	ALL RWYS
ARR 119.65 DEP 125.55	127.9 379.9	8L-26R 8R-26L 9L-27R 9R-27L 10-28 RWYS 119.1 125.325 123.85 119.3 119.5 254.4 PRM 126.9	(8L-26R, 8R-26L) (9L-27R, 9R-27L) 10-28 121.9 121.75 121.65 254.4		

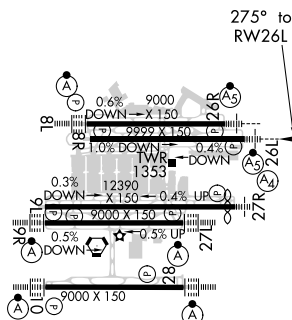


CLNC DEL	CPDLC
118.1	



ELEV 1026	D	TDZE 996
-----------	----------	----------

RADAR REQUIRED



1500	3500	TROYS	VGSI and RNAV glidepath not coincident (VGSI Angle 3.00/TCH 63).				
↑	↗	△					
			DEJAA	MARKD	BOYKN	JIRRI	
			2600		4000	5000	
RW26L			275°				
			2600	GP 3.00° TCH 52			
			4.9 NM	5.3 NM	3.5 NM	6.1 NM	
CATEGORY	A		B		C		D
PV	DA	1281/24		285 (300-½)			
NAV/ VNAV	DA	1360/35		364 (400-⅝)			

HIRL all Rwy
TDZ/CL Rwy 8L, 9R, 10, 26R,
27L and 28

ATLANTA, GEORGIA
Orig 18SEP14

33°38'N-84°26'W

HARTSFIELD-JACKSON ATLANTA INTL (ATL)

RNAV (GPS) PRM RWY 26L (SIMULTANEOUS CLOSE PARALLEL)

SE-4, 03 DEC 2020 to 31 DEC 2020