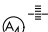


WAAS CH 70400 W27B	APP CRS 275°	Rwy Idg 11690 TDZE 985 Apt Elev 1026
--	------------------------	---

RNAV (GPS) RWY 27R
HARTSFIELD-JACKSON ATLANTA INTL (ATL)

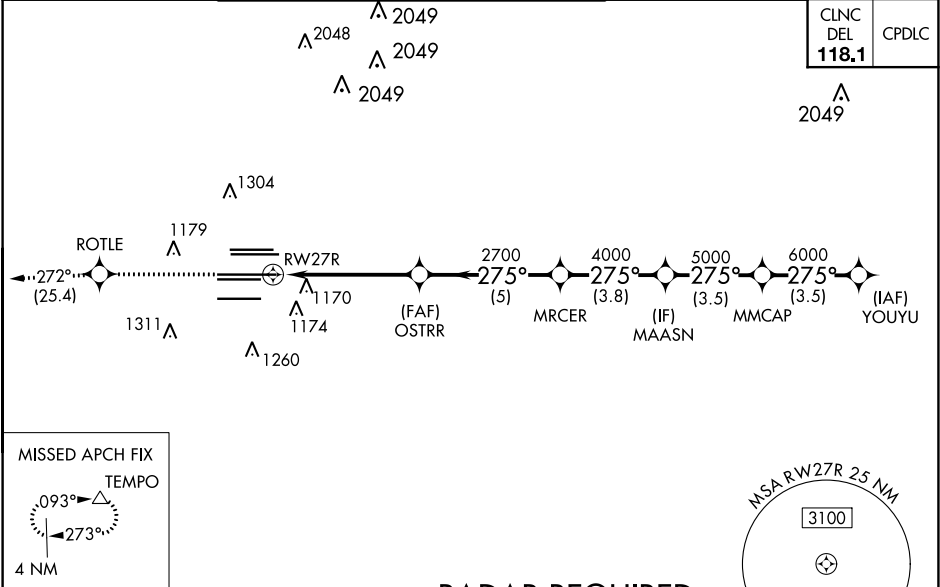
▼ For uncompensated Baro-VNAV systems, LNAV/VNAV NA below -7°C (20°F) or above 54°C (130°F). Simultaneous approach authorized with Rwy 26R or 26L or 28, or Rwy 26R and 28. DME/DME RNP-0.3 NA. For inop MALS, increase LNAV/VNAV Cat D visibility and LNAV Cats C and D visibility ¼ mile. LNAV procedure NA during simultaneous operations. Use of FD or AP providing RNAV track guidance required during simultaneous operations. Inop table does not apply to LPV, all Cats.

MALS

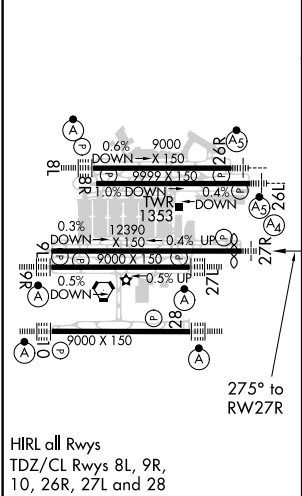


MISSED APPROACH: Climb to 4000 direct ROTLE and on track 272° to TEMPO and hold.

D-ATIS ARR 119.65	ATLANTA APP CON 127.9 379.9	ATLANTA TOWER					ALL RWYS	GND CON	ALL RWYS
DEP 125.55		8L-26R	8R-26L	9L-27R	9R-27L	10-28	(8L-26R,8R-26L)	(9L-27R,9R-27L)	10-28
		119.1	125.325	123.85	119.3	119.5	254.4	121.9	121.75 121.65 254.4



ELEV 1026	D	TDZE 985
-----------	----------	----------



ATLANTA, GEORGIA
Amdt 4 18SEP14

RADAR REQUIRED

4000	ROTTLE	tr 272°	TEMPO	VGSI and RNAV glidepath not coincident (VGSI Angle 3.00/TCH 72).		YOUYU
*LNAV only.		*1.3 NM to RW27R		RW27R		7000
1.3		3.9 NM	5 NM	3.8 NM	3.5 NM	3.5 NM
CATEGORY	A	B	C	D		
LPV DA	1185/40		200 (200-¾)			
LNAV/VNAV DA	1461-1¾		476 (500-1¾)			
LNAV MDA	1460/40	475 (500-¾)	1460/60	475 (500-1¼)		

HARTSFIELD-JACKSON ATLANTA INTL (ATL)

33°38'N-84°26'W

RNAV (GPS) RWY 27R

SE-4, 03 DEC 2020 to 31 DEC 2020

SE-4, 03 DEC 2020 to 31 DEC 2020