

WAAS CH 56300 W26A	APP CRS 275°	Rwy Idg 9999 TDZE 996 Apt Elev 1026
--	------------------------	--

RNAV (GPS) RWY 26L

HARTSFIELD-JACKSON ATLANTA INTL (ATL)

▼

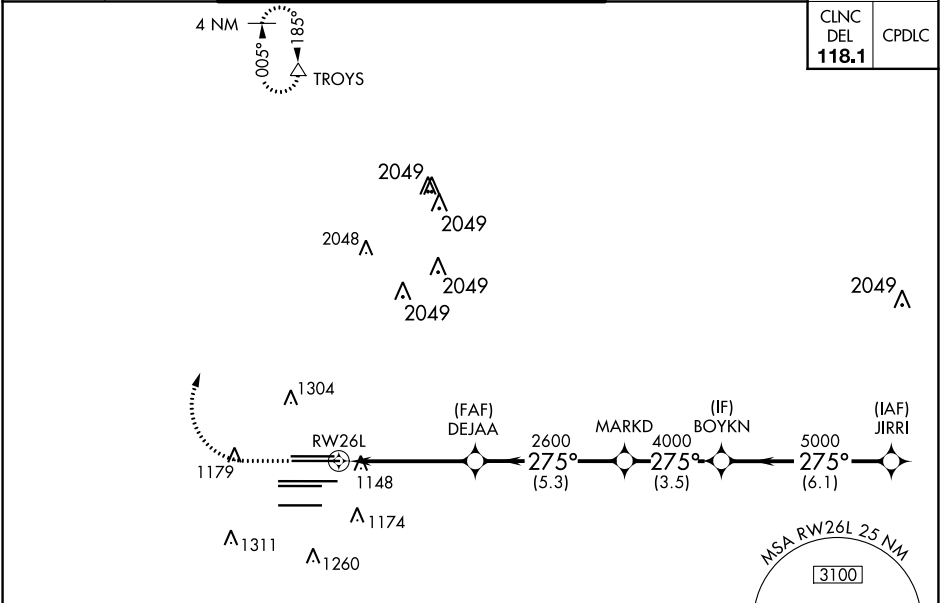
For uncompensated Baro-VNAV systems, LNAV/VNAV NA below -7°C (20°F) or above 54°C (130°F). DME/DME RNP-0.3 NA. For inop MALSR, increase LPV alt Cats visibility to RVR 4500, LNAV/VNAV all Cats visibility to RVR 6000. Simultaneous approach authorized with Rwy 27L or 27R or 28. LNAV procedure NA during simultaneous operations. Use of FD or AP providing RNAV track guidance required during simultaneous operations.

MALSR

MISSED APPROACH:

Climb to 1500 then climbing right turn to 3500 direct TROYS and hold.

D-ATIS ARR 119.65 DEP 125.55	ATLANTA APP CON 127.9 379.9	ATLANTA TOWER 8L-26R 8R-26L 9L-27R 9R-27L 10-28 RWYS 119.1 125.325 123.85 119.3 119.5 254.4						ALL RWYS 121.9	GND CON 121.75	ALL RWYS 121.65 254.4
--	--	---	--	--	--	--	--	-----------------------------	--------------------------	------------------------------------



ELEV 1026

D

TDZE 996

HIRL all Rwy

TDZ/CL Rwy 8L, 9R, 10, 26R, 27L and 28

RADAR REQUIRED

1500

3500

TROYS

VGSI and RNAV glidepath not coincident (VGSI Angle 3.00/TCH 63).

*LNAV only.

1.3

3.6 NM

5.3 NM

3.5 NM

6.1 NM

DEJAA

MARKD

BOYKN

JIRRI

2600

4000

5000

275°

5000

GP 3.00° TCH 52

CATEGORY	A	B	C	D
LPV	DA	1281/24	285 (300-½)	
LNAV/VNAV	DA	1360/35	364 (400-⅝)	
LNAV MDA	1460/24	464 (500-½)	1460/50	464 (500-1)

ATLANTA, GEORGIA

Amdt 4 18SEP14

33°38'N-84°26'W

HARTSFIELD-JACKSON ATLANTA INTL (ATL)

RNAV (GPS) RWY 26L