

**ILS PRM RWY 9R (SA CAT I)
(SIMULTANEOUS CLOSE PARALLEL)
HARTSFIELD-JACKSON ATLANTA INTL (ATL)**

MISSED APPROACH: Climb to 1500 then climbing left turn to 4000 on ATL VORTAC R-092 to CONNI INT/ATL 31 DME/RADAR and hold.

LOM FLANC 244 FT. 277A  **RADAR REQUIRED** ^A 2048 CLNC DEL **118.1** CPDLC

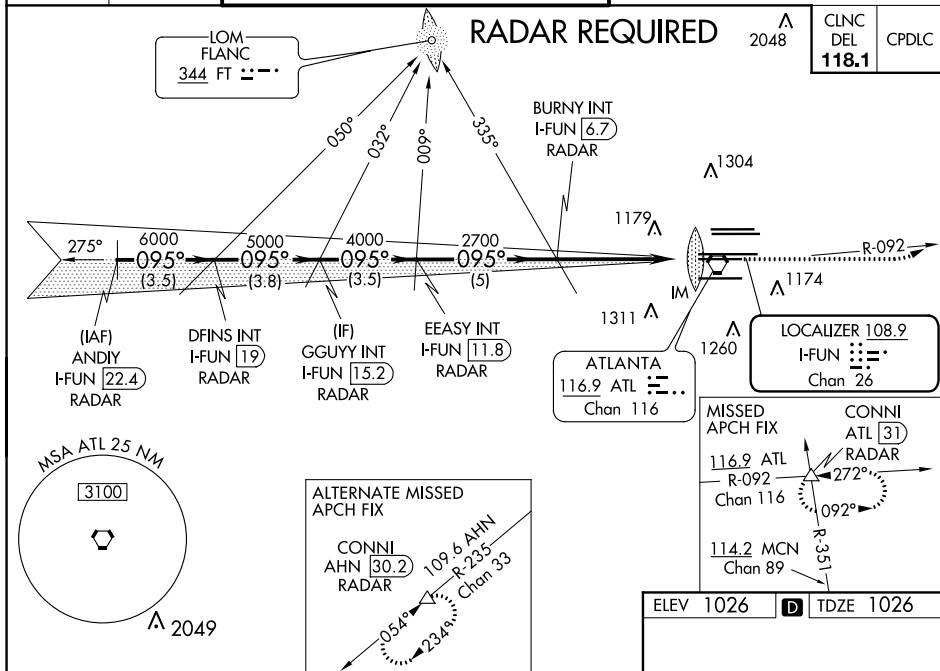
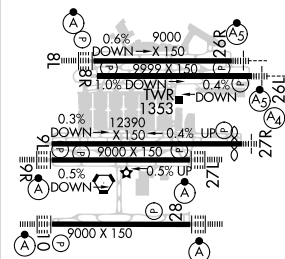


Figure 1-10 is a 2D plot of a glidepath. The plot shows a glidepath starting at 7000 feet and descending to 2700 feet. Key data points include: ANDY I-FUN 22.4, DFINS INT I-FUN 19, GGUYI INT I-FUN 15.2, EASY INT I-FUN 11.8, and BURNY INT I-FUN 6.7. The plot also shows a 3.5 NM distance, a 3.8 NM distance, a 3.5 NM distance, a 5 NM distance, and a 5.1 NM distance. The plot is labeled with 'GS 3.00° TCH 55' and 'RA 196/14 150 DA 1176'.

SA CATEGORY | ILS - SPECIAL AIRCREW
& AIRCRAFT CERTIFICATION REQUIRED



HIRL all Rwys
TDZ/CL Rwys 8L, 9R, 10, 26R,
27L and 28

ILS PRM RWY 9R (SA CAT I) (SIMULTANEOUS CLOSE PARALLEL)