

**(AA) ILS PRM RWY 28 (SA CAT I)
(SIMULTANEOUS CLOSE PARALLEL)
HARTSFIELD-JACKSON ATLANTA INTL (ATL)**

LOC/DME I-PKU 111.75 Chan 54 (Y)	APP CRS 275°	Rwy Idg 9000 TDZE 998 Apt Elev 1026
--	------------------------	--

▼ Simultaneous close parallel approach authorized with ILS PRM and RNAV PRM Rwy 26R or 26L or 27R or 27L or Rwy 26R and 27R, or Rwy 26R and 27L, or Rwy 26L and 27R, or Rwy 26L and 27L. Procedure not authorized when glideslope not available. Dual VHF comm required. See additional requirements on AHP. Requires specific OPSPEC, MSPEC, or LOA approval and use of HUD to DH.

ALSF-2



MISSED APPROACH: Climb to 1400 then climbing left turn to 3000 on ATL VORTAC R-185 to SCARR INT/ATL 15 DME and hold.

D-ATIS	ATLANTA	ATLANTA TOWER						ALL				
ARR 119.65	APP CON	8L-26R	8R-26L	9L-27R	9R-27L	10-28	RWYS		GND CON		ALL	
DEP 125.55	127.9 379.9	119.1	125.325	123.85	119.3	119.5	254.4		121.9	121.75	121.65	254.4
		PRM 133.425										

LOCALIZER 111.75

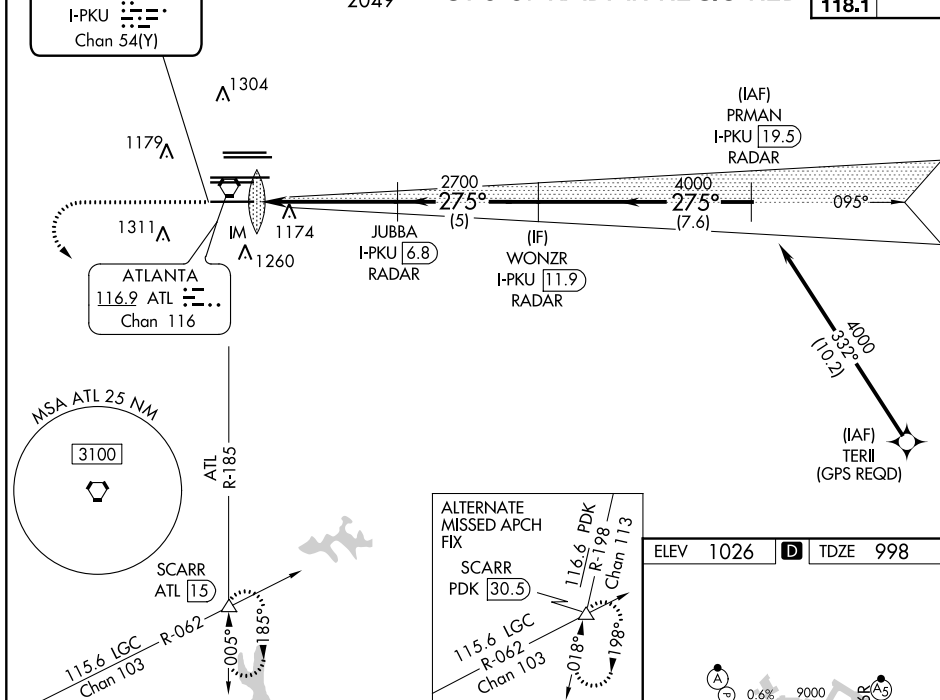
I-PKU ䷗
Chan 54(Y)

$$\frac{\Lambda_{2049}}{\Lambda_{2049}}$$

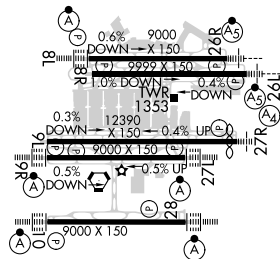
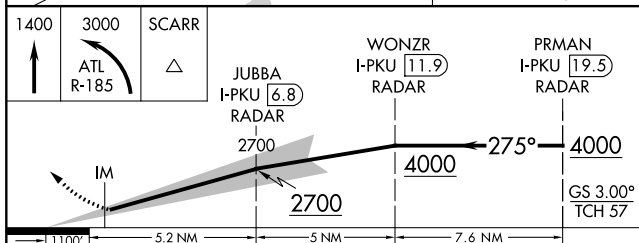
GPS or RADAR REQUIRED

CLNC
DEL
118.1

CPDLC



ELEV	1026	D	TDZE	998
------	------	----------	------	-----



SA CATEGORY I ILS - SPECIAL AIRCREW
& AIRCRAFT CERTIFICATION REQUIRED

HIRL all Rwys
TDZ/CL Rwys 8L, 9R,
10, 26R, 27L and 28