

ATLANTA, GEORGIA

AL-26 (FAA)

ILS PRM RWY 26L

(SIMULTANEOUS CLOSE PARALLEL)

HARTSFIELD-JACKSON ATLANTA INTL (ATL)

LOC/DME I-BRU 108.7 Chan 24	APP CRS 275°	Rwy Idg 9999 TDZE 996 Apt Elev 1026
---	------------------------	--

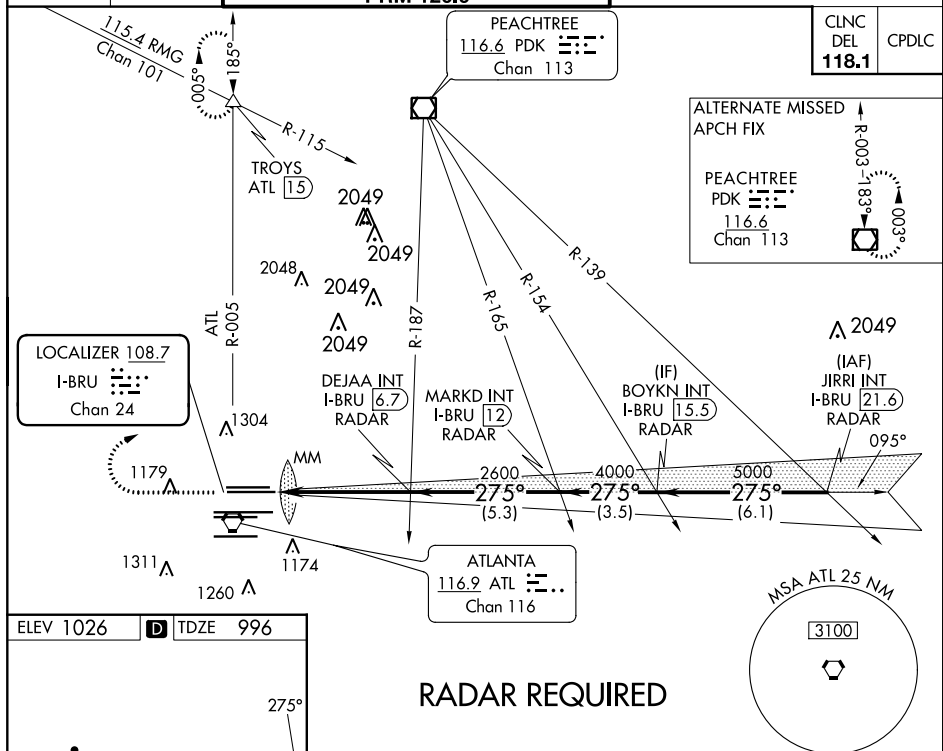
T Simultaneous close parallel approach authorized with ILS PRM and RNAV PRM Rwy 27R or 27L or 28, or Rwy 27R and 28, or Rwy 27L and 28. Procedure not authorized when glideslope not available. Dual VHF comm required. See additional requirements on AAPP. For inop MALSR increase S-ILS 26L visibility all Cts to RVR 4500.

MALSR



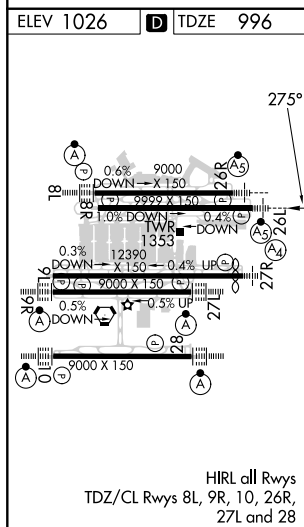
MISSED APPROACH: Climb to 1500 then climbing right turn to 3500 on ATL VORTAC R-005 to TROYS INT/ATL 15 DME and hold. (TACAN aircraft climb to 1500 then climbing right turn to 3500 on heading 005° for RADAR vectors.)

D-ATIS	ATLANTA	ATLANTA TOWER						ALL	GND CON				ALL
ARR 119.65	APP CON	8L-26R	8R-26L	9L-27R	9R-27L	10-28	RWYS	(8L-26R,8R-26L)	(9L-27R,9R-27L)	10-28	RWYS		
DEP 125.55	127.9 379.9	119.1	125.325	123.85	119.3	119.5	254.4	121.9	121.75	121.65	254.4		
		PRM 126.9											



SE-4, 03 DEC 2020 to 31 DEC 2020

SE-4, 03 DEC 2020 to 31 DEC 2020



ATLANTA, GEORGIA
Amdt 2 18SEP14

33°38'N-84°26'W

HARTSFIELD-JACKSON ATLANTA INTL (ATL)

ILS PRM RWY 26L (SIMULTANEOUS CLOSE PARALLEL)