

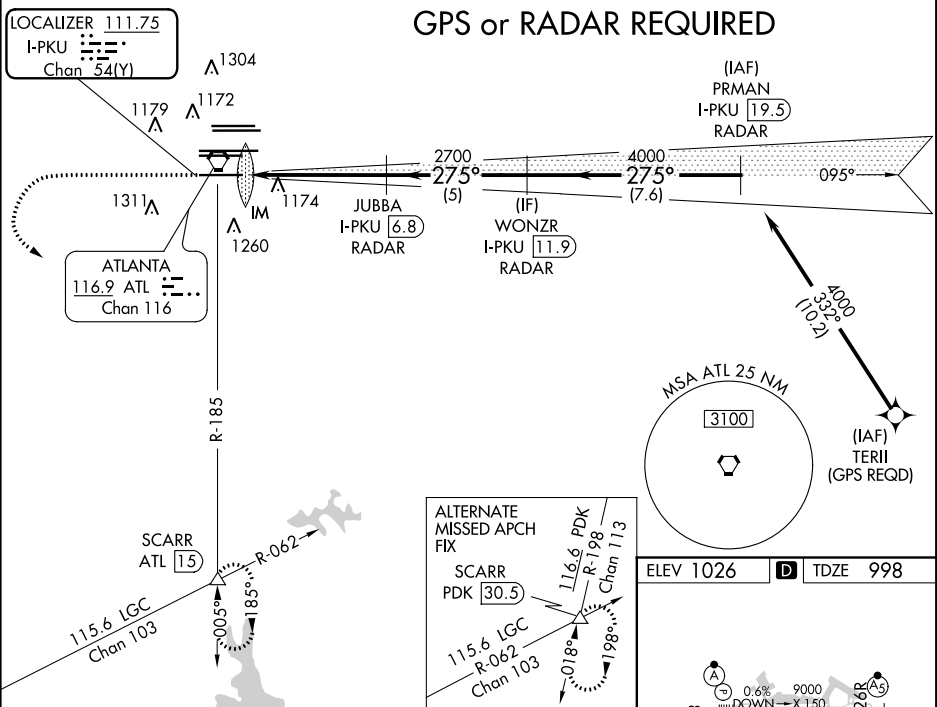
LOC/DME I-PKU 111.75 Chan 54 (Y)	APP CRS 275°	Rwy Idg TDZE Apt Elev 9000 998 1026
--	------------------------	---

ILS or LOC RWY 28
HARTSFIELD-JACKSON ATLANTA INTL (ATL)

Simultaneous approach authorized with Rwy 26R or 26L or 27R, or Rwys 26R and 27R. DME or Radar Required.		ALSIF-2 	MISSED APPROACH: Climb to 1400 then climbing left turn to 3000 on ATL VORTAC R-185 to SCARR INT/ ATL 15 DME and hold.
--	--	-------------	--

D-ATIS ARR 119.65 DEP 125.55	ATLANTA APP CON 127.9 379.9	ATLANTA TOWER 8L-26R 8R-26L 9L-27R 9R-27L 10-28 RWYS 119.1 125.325 123.85 119.3 119.5 254.4	ALL RWYS 121.9 121.75 121.65 254.4	GND CON 10-28 RWYS	ALL RWYS
--	--	--	---	-----------------------	-------------

Δ 2049 Δ 2049		CLNC DEL 118.1	CPDLC
------------------	--	-----------------------------	-------



1400 ↑ ATL R-185	3000 ↑ ATL R-185	SCARR △	JUBBA I-PKU [6.8] RADAR	WONZR I-PKU [11.9] RADAR	PRMAN I-PKU [19.5] RADAR
*LOC only. I-PKU [1.7]	*I-PKU [3]				
0.1 NM	1.2 NM	3.9 NM	5 NM	7.6 NM	
CATEGORY	A	B	C	D	
S-ILS 28	1198/18		200 (200-1/2)		
S-LOC 28	1480/24	482 (500-1/2)	1480/50	482 (500-1)	

GS 3.00°
TCH 57

275°

4000

2700

275°

4000

275° 5.2 NM from FAF

HIRL all Rwys
TDZ/CL Rwys 8L, 9R,
10, 26R, 27L and 28

FAF to MAP 5.2 NM

Knots	60	90	120	150	180
Min:Sec	5:12	3:28	2:36	2:05	1:44

SE-4, 03 DEC 2020 to 31 DEC 2020

SE-4, 03 DEC 2020 to 31 DEC 2020